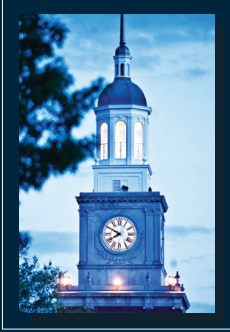


PROGRAM BOOK



Office of
Research



HOWARD UNIVERSITY
RESEARCH
SYMPOSIUM

APRIL 6 - MAY 6, 2026

April 6, 2026

Dear Howard University Community,

The Office of Research is pleased to host Howard University Research Month, taking place **April 6 – May 6, 2026**. Research Month is an annual opportunity to celebrate and honor the outstanding scholarship and creative inquiry conducted by Howard University's faculty, students, and research staff. The research community's response to HU Research Month has been and continues to be overwhelmingly supportive. This sustained engagement is vital to our research mission, which emphasizes the promotion, development, and implementation of research that advances knowledge and enhances the quality of life of our students, faculty, and staff. Faculty, students, and research staff who showcase their work during the HU Research Symposium and participate in the wide range of research-focused events help carry forward Howard University's enduring legacy as a preeminent institution of higher education.

Key events of [HU Research Month](#) will include the following:

THE OPENING EVENT

- Office of Research, HU Research Month Opening Celebration on April 6.

OUR PARTNER EVENTS

- From The HU Cancer Center, The American Cancer Society Seminar on April 8.
- The Department of Political Science Research Day on April 9
- The Center for Applied Data Science and Analytics (CASDA) Symposium on April 13.
- The IBM HBCU Cancer Center, HBCU Quantum Day on April 14.
- The Innovations, Challenges and Future Directions in Applying Technologies to AI Research Symposium on April 15.
- The Translating Science for Impact: Engaging the Public, Press, Podcasts, and Policymakers Seminar on April 16.
- The Advancing Cancer Therapeutics: Igniting Discovery, Advancing Equity and Driving Impact on April 17.
- The Foundations of Technology Transfer: Definitions and Benefits on April 20.
- The Climate Change and Gender-Based Violence: An Overlooked Nexus Symposium on April 22.
- The COAS Interdisciplinary AI Symposium on April 23.
- The Office of Research, Inspiring Academic Excellence & Innovation Awards on April 24.
- The 13th Mid-Atlantic Student Colloquium on Speech, Language and Learning on April 25.
- The How Fast Can We Go? How Much Energy Can We Generate and Control Workshop on April 27 and 28.
- The Annenberg Honors Program: Framing the Shift: Race, Representation, and the Boundaries of Free Expression on May 1.
- From The HU Wealth Institute, Research to Policy Convening: Drivers & Solutions to Wealth Inequality on May 4.

THE SIGNATURE EVENT

- The widely acclaimed Research Symposium will be on April 30 -May 1. This signature event brings together students, faculty, and research staff in the Armour J. Blackburn Center to discuss their research findings with members of the Howard community, external constituents, and supporters from various federal and local agencies as well as representatives of the philanthropic and higher education community.

THE CLOSING EVENT

- The Howard University Undergraduate Research Journal, Ukweli, Awards Ceremony on May 6, 2026.

Please mark your calendars and save the dates for the events listed above!

Sincerely,

Kim Michelle Lewis, Ph.D.

Vice President for Research and Chief Research Officer

HOWARD UNIVERSITY

RESEARCH SYMPOSIUM

April 6 - May 6, 2026

PROGRAM BOOK

RESEARCH MONTH 2026 ACTIVITIES

MONDAY, APRIL 6

3:00 PM – 7:00 PM

Research Month Opening Celebration

Join us as we kick off Howard University Research Month 2026 with an engaging and inspiring Welcome Reception! This special gathering will bring together faculty, researchers, and students, to celebrate innovation, collaboration, and discovery across all disciplines. Start Research Month 2026 with inspiration and connection—where innovation meets excellence.

Speakers:

Pamela A.G. Clarke, Senior Director of Research Development & Strategic Partnerships

Kim M. Lewis, Vice President off Research & Chief Research Officer

Sandra Richardson, Assistant Vice President for Research Development & Innovation

Location: Interdisciplinary Research Building, Multipurpose Room

TUESDAY, APRIL 7

9:00 AM – 12:30 PM

Addressing Diet-Related Implicit Bias and Strengthening Voices in Nutrition and Healthcare Collaboration

The Symposium will be hosted as part of Howard University Research Month to showcase research and educational outcomes from the Nourishing Futures project—an initiative that examines dietary behaviors, nutrition knowledge, health risks, and academic outcomes of Howard University students pursuing a healthcare-related discipline. As part of this project, we plan to develop and implement targeted nutrition-based interventions and strategies that empower students to make healthier choices and address barriers to meeting the dietary guidelines for Americans, including serving sizes for core elements like dairy that make up a healthy dietary pattern.

Speakers:

Oluwakemi Adeola, Ph.D. RD, :DN, FAND, Clinical Assistant Professor, Nutritional Sciences

Ashley Carter, MS, RD, LDN, Registered Dietitian, Eat Well Exchange

Katherine Manuel, Ph.D., RD, LDN, FAND, Assistant Professor, Nutritional Sciences

Priscilla Mpsi, MD., FAAP, Pediatrician, Christiana Care

Grayce Amos, Research Assistant, Nutritional Sciences

Leah Biniam, Research Assistant, Nutritional Sciences

Zaryah Stroman, Research Assistant, Nutritional Sciences

Location: Interdisciplinary Research Building, Multipurpose Room

RESEARCH MONTH 2026 ACTIVITIES

TUESDAY, APRIL 7

2:30 PM – 5:30 PM

E.U. – U.S. Collaboration Opportunities in Research and Innovation with Horizon Europe

The Science Counsellor of the European Union accompanied by Science Counsellors and Attachés from France, Poland, Hungary and Austria will present collaboration opportunities with Europe. They will highlight the strategic opportunities for collaboration between European and American institutions through Horizon Europe, the E.U.'s flagship research and innovation program as well as bilateral programs with EU Member States.

Speakers:

Florent Berbard, Science Counsellor at The European Union to The United States of America

Fabien Agenes, Ph.D., Inserm Representative Office in North America

Maria Brogren, Counselor for Science & Innovation, Embassy of Sweden in Washington, DC

Katarzyna Granat, Science Diplomacy, Embassy of Poland in the United States

Tonijia Hope

Location: Interdisciplinary Research Building, Multipurpose Room

WEDNESDAY, APRIL 8

11:00 AM – 2:00 PM

American Cancer Society Funding Opportunities for Faculty, Postdocs and Graduate Students

Faculty Session: As the nation's largest private, not-for-profit funder of cancer research, the American Cancer Society (ACS) is committed to advancing basic, translational, clinical, and cancer control science to improve the lives of people affected by cancer. This session will provide an overview of ACS funding mechanisms available to faculty investigators, including eligibility requirements, application strategies, and the peer review process. Participants will learn how ACS supports innovative research and career development and will have the opportunity to ask questions during an interactive Q&A.

Trainee Session: As the nation's largest private, not-for-profit funder of cancer research, the American Cancer Society (ACS) is committed to advancing basic, translational, clinical, and cancer control science to improve the lives of people affected by cancer. Discover how ACS supports the next generation of cancer researchers through competitive funding opportunities. This session will highlight ACS

postdoctoral fellowships and related resources designed to help graduate students and postdoctoral fellows build successful research careers and secure funding for their next steps. Participants will learn how to position themselves competitively for these awards and make the most of their training years.

Speakers:

Paul Campbell, Ph.D., Scientific Director, Extramural Discovery Science, American Cancer Society

Carla Williams, Ph.D. Interim Director, Howard University Cancer Center

Location: Interdisciplinary Research Building, Multipurpose Room

THURSDAY, APRIL 9

9:00 PM – 5:00 PM

Political Science Research Day

The Political Science Research Day will serve as a mini conference Showcasing undergraduate and graduate research while fostering a culture of scholarly inquiry, mentoring, and professional development.

The event will highlight:

- Highlight original student research across subfields of political science
- Provide students with experience presenting academic work in a conference-style setting
- Encourage and graduate student to submit research to professional conferences
- Strengthen faculty-student mentorship through panel moderation and feedback

Speakers:

Jayla Gray, Political Science, Undergraduate Student

Kiara Usher Jackson, Political Science, Undergraduate Student

Katia Papailler , Political Science, Undergraduate Student

Victoria Matthews , Political Science, Undergraduate Student

Hannah Rose Williams, Political Science, Undergraduate Student

Location: Frederick Douglass Memorial Hall, Room 221

RESEARCH MONTH 2026 ACTIVITIES

FRIDAY, APRIL 10

10:00 AM – 4:00 PM

American Society for Microbiology. DC Chapter Symposium

Join DC area microbial scientists (professionals and students) for an exciting meeting of science and networking. This year's Spring meeting is a one-day symposium highlighting innovative research as well as providing opportunities for networking and outreach. The Keynote Speaker is **Kumaran Ramamurthi, Ph.D. (NIH/NCI, CCR), "Orthogonal Cell Division in Staphylococcus aureus"**.

Speakers:

Kumaran Ramamurthi, Ph.D. (NIH/NCI, CCR), "Orthogonal Cell Division in Staphylococcus aureus"

Karl Thompson, Ph.D. Associate Professor, Microbiology

Location: Interdisciplinary Research Building, Multipurpose Room

MONDAY, APRIL 13

12:00 PM – 5:00 PM

CADSA Symposium on How Data and AI are Reshaping Research

The 2026 CADSA Symposium on How Data and AI Are Reshaping Research will explore how emerging technologies are transforming the research enterprise, from accelerating discovery, enabling interdisciplinary collaboration, and driving inclusive innovation. Hosted by Howard University's Center for Applied Data Science and Analytics (CADSA), the symposium brings together students, faculty, and research partners for a day of flash talks, think tanks, panels, and poster sessions that highlight how data and AI are unlocking insights, informing solutions to pressing societal challenges, and advancing national goals to expand opportunity and improve lives.

Speakers:

Nathan Alexander, Assistant Professor, Curriculum & Instruction

Edmund Ameyaw, Assistant Professor, Pharmaceutical Sciences

Latanya Brown-Robertson, Professor, Economics & Associate Dean

Katherine Gurski, Professor, Mathematics

Barron Harvey, Ph.D., Associate Provost of Academic Innovation and Strategic Initiatives

Brett Jefferson, Data Scientist, Pacific Northwest National Laboratory

Wai Lim Ku, Assistant Professor, Internal Medicine

HOWARD UNIVERSITY

RESEARCH MONTH 2026 ACTIVITIES

Basheer Qolomany, Assistant Professor Internal Medicine
Kenton Ramsby, Associate Professor, English
Talitha Washington, Executive Director of CADSA
Jessica Whitaker, Adjunct Instructor, CADSA, The Graduate School
Jinru Xu, Assistant Professor, Biology
Amy Yeboah, Associate Professor, Earth Environment & Equity

Location: Interdisciplinary Research Building, Multipurpose Room

TUESDAY, APRIL 14

11:00 AM – 5:00 PM

HBCU Quantum Day

Over the past five years, the IBM–HBCU Quantum Center has helped build a national network of scholars advancing quantum research, education, and workforce development. This event celebrates those achievements and the community that made them possible. We welcome faculty, students, partners, and members of the broader research community to join us for a day of discovery, dialogue, and connection. This special gathering will feature: Faculty Research Presentations from award-winning HBCU faculty, Graduate Research Poster Session highlighting emerging quantum research and Cross-institutional engagement and collaboration opportunities and a Networking Reception.

Speakers:

Hongmei Chi, Ph.D., Computer & Information Sciences, Florida A & M University

Abdalla Darwish, Ph.d., Professor, Physics, Dillard University

Patrick Flanigan, Ph.D.

Akshaya Kumar, Ph.D., Associate Professor, Physics, Tuskegee University

Kayle Lee, Ph.D., Growth Product Manager, IBM

Laura Marshall, Ph.D., Assistant Professor, Journalism & Mass Communication,

Moussa N’Gom, Ph.D.

Eric Seabron, Ph.D., Assistant Professor, Electrical Engineering & Computer Science, Howard University

Anthony Stewart, Ph.D., Southern University

Daniel Hart, Ph.D., Southern University, Baton Rouge

Location: Interdisciplinary Research Building, Multipurpose Room

RESEARCH MONTH 2026 ACTIVITIES

WEDNESDAY, APRIL 15

12:00 PM – 5:00 PM

AI Frontiers: Innovations, Challenges and Future Directions in Applying Technologies to Interdisciplinary Artificial Intelligence Research

The Artificial Intelligence & Machine Learning Symposium is a premier gathering of researchers, exploring the latest advancements in artificial intelligence (AI) and machine learning (ML). This symposium serves as a platform for thought leaders to share innovative research, innovative applications, and emerging trends shaping the future of AI-driven technologies. Attendees will engage in panel discussions and technical sessions covering topics such as Natural Language Processing, Deep Learning, AI and National Security, Machine Learning Fundamentals and Advances, Robotics and Autonomous Systems, AI in Health, AI in Environmental Sciences, Generative AI & Creative Applications, Human Computer Interaction, AI Ethics, AI for Cultural and Historical Preservation, and real-world AI applications in healthcare, finance, cybersecurity, and beyond. A central theme of the symposium is AI for Social Good and Interdisciplinary approaches to emphasizing the role of artificial intelligence in addressing challenges in healthcare, cybersecurity, environmental sustainability, and equity. The symposium fosters collaboration between academia, industry, and government, promoting interdisciplinary dialogue on AI's societal impact, challenges in responsible AI development, and future research directions. With interactive discussions, and networking opportunities, this event is an invaluable experience for AI professionals, researchers, students, and technology enthusiasts looking to stay ahead in the rapidly evolving AI landscape. Join us for an exciting exchange of ideas and innovations that will shape the next generation of intelligent systems.

Location: Interdisciplinary Research Building, Multipurpose Room

THURSDAY, APRIL 16

1:00 PM – 4:00 PM

Integrating Artificial Intelligence in Research

Join us for an engaging and forward-looking session on the evolving role of artificial intelligence (AI) in research. This event will highlight the landscape of AI at Howard University and explore how emerging AI tools are transforming scientific discovery. Attendees will gain a deeper understanding of how AI-driven methodologies are reshaping research workflows and enabling investigators to address complex questions with unprecedented speed and accuracy.

A highlight of the event will be a dynamic panel discussion featuring experienced researchers. Panelists will share practical insights on how investigators can thoughtfully and effectively integrate AI tools into their own research activities. Topics will include selecting appropriate AI platforms, developing responsible and ethical data practices, navigating implementation challenges, and building interdisciplinary collaborations that support innovation. Designed for faculty, research staff, trainees, and students across disciplines, this symposium session will provide both conceptual grounding and actionable guidance for leveraging AI to advance discovery in academic research environments.

Speakers:

Anietie Andy, Assistant Professor

Wai Lim Ku, Assistant Professor

Gloria Washington, Associate Professor

Location: Interdisciplinary Research Building, Multipurpose Room

FRIDAY, APRIL 17

12:00 PM – 5:00 PM

Advancing Cancer Therapeutics: Igniting Discover. Advancing Equity. Driving Impact

Join us for our Research month activity where Pharmacy & Pharmaceutical Sciences will dedicate one day to advancing cancer therapy. Our team will share key data and progress updates, dig into emerging insights on targets and resistance, and align on the next set of experiments to accelerate the most promising therapeutic strategies. Expect focused discussion, clear decisions, and a strong push toward translating science into better outcomes for patients.

Speakers:

Earl Ettiene, Ph.D., Associate Professor, Pharmaceutical Sciences

Location: Interdisciplinary Research Building, Multipurpose Room

MONDAY, APRIL 20

4:00 PM – 5:00 PM

If AI Can Write the Essay, What Are We Teaching ?

Drawing on work with faculty through the Cornell Center for Teaching Innovation, this conversation explores how generative AI is challenging traditional assignments and prompting educators to rethink what meaningful learning looks like in the age of AI.. Hybrid event (~80) will examine how artificial intelligence is reshaping teaching, scholarship, and intellectual inquiry across academic disciplines.

Speakers:

Kyndra Middleton, Ph.D., CETLA Interim Director , Howard University
Rob Vanderlan, Ph.D., CTI, Cornell University

Location: The Founders Library, Browsing Room

TUESDAY, APRIL 21

12:00 PM – 5:00 PM

Office of Research, Technology Transfer – After the Paper and Beyond the Lab: From Research to Real World Impact

This event is a multi-part, skills-building workshop designed to give faculty and researchers a strong foundational understanding of how Howard University supports the journey from research discovery to commercialization, public impact, and external partnerships. Participants will gain practical clarity on the technology transfer process and how to position their work for broader impact. This event will offer faculty and researchers a practical, immersive introduction to early-stage commercialization. Through rotating stations and direct engagement with innovation stakeholders, participants gain applied experience with key processes such as invention disclosure, intellectual property preparation, pitch development, funding pathways, and internal partnership navigation. By the end of the session, participants will have hands-on exposure to the core steps, documents, decisions, and partnerships that shape the commercialization pathway at Howard University. They will leave with clearer guidance, practical tools, and direct connections to support their innovation journey.

Speakers:

Adia Coleman, Director of Technology Transfer & Commercialization
Troy A. Duffie, Associate Director of Ventures & Entrepreneurship

Location: Interdisciplinary Research Building, The Multipurpose Room

WEDNESDAY, APRIL 22

12:00 PM – 5:00 PM

Climate Change and Gender-Based Violence: An Overlooked Nexus

Climate change is widely recognized as a global crisis that amplifies existing social inequalities, disproportionately impacting vulnerable populations. Research shows that the increasing frequency and severity of climate-related disasters—such as floods, hurricanes, droughts, and heatwaves—heighten risks for marginalized groups, particularly women and girls. For example, the United Nations reports that every 1°C rise in global temperature is associated with a 4.7% increase in intimate partner violence. Evidence further indicates that disasters often lead to increased gender-based violence (GBV), including sexual exploitation, intimate partner violence, and trafficking, as communities face displacement, resource scarcity, and the breakdown of social protection systems. Climate-induced displacement compounds these vulnerabilities, creating environments where protection mechanisms are weak or absent. Despite growing recognition of climate change as a global emergency, its gendered impacts, particularly the link between disasters and GBV, remain underexplored in policy and practice. Furthermore, emergency response frameworks frequently fail to integrate GBV prevention and gender-sensitive approaches, leaving women and girls exposed to harm and undermining resilience-building efforts.

Speakers:

Helen Bond, Ph.D., Professor, Curriculum & Instruction, School of Education

Goulda Downer, Ph.D., Professor, College of Medicine & Director, Center of Excellence

Carolyn Kitione, Regional Representative, Shifting The Power Coalition, Fiji

Doris K. Macharia, Ph.D. President, Elizabeth Glaser Pediatric AIDS Foundation (EGPAF)

Daniele Magloire, Vice-President, Board of the Foundation

Jacqueline Patterson, Founder & Executive Director, The Chisholm Legacy Project (TCLP)

Location: Interdisciplinary Research Building, Multipurpose Room

THURSDAY, APRIL 23

RESEARCH MONTH 2026 ACTIVITIES

8:30 AM – 3:30 PM

College of Arts and Sciences (COAS) AI Symposium

The College of Arts and Sciences at Howard University invites the entire Howard community, external partners, secondary school leaders, faculty, staff, and students from across disciplines to participate in this comprehensive exploration of artificial intelligence's transformative impact on teaching, research, and professional practice. This symposium marks the formal launch of ASCEND-AI, a \$4 million Department of Education FIPSE-funded collaboration between Howard University and Bowie State University, while providing a platform for broad community engagement with AI literacy initiatives. Through keynote addresses from industry leaders, faculty presentations showcasing disciplinary AI integration, student perspectives on AI's role in education, and collaborative discussions about responsible AI implementation, participants will examine both the opportunities and challenges artificial intelligence presents for higher education and workforce development. The symposium emphasizes the distinctive role HBCUs play in ensuring diverse representation in AI development and application while maintaining academic integrity and critical evaluation frameworks.

Speakers:

Latanya Brown-Robertson, Ph.D., Associate Dean for Academic Innovation & Student Success, Principal Investigator, ASCEND-AI-Howard University

Kim M. Lewis, Ph.D., Vice President for Research & Chief Research Officer
Rubin Patterson, Ph. D. Dean, College of Arts & Sciences

Amy Yeboah Quarkume, Ph.D., Associate Professor of Earth, Environment & Equity, Co-PU, ASCEND-AI, Howard University

Rand Obeidat, Co-PI, ASCEND-AI – Bowie State University

Azene Zenebe, Co-PI, ASCEND-AI – Bowie State University

Location: Interdisciplinary Research Building, Multipurpose Room

FRIDAY, APRIL 24

RESEARCH MONTH 2026 ACTIVITIES

4:00 PM – 7:00 PM

Inspiring Academic Excellence & Innovation Awards

You Are Cordially Invited to the Inspiring Academic Excellence & Innovation Awards Program

Howard University is pleased to invite you to the **Inspiring Academic Excellence & Innovation Awards**, an awards program dedicated to recognizing and celebrating the exceptional achievements of our faculty and research staff. These awards honor individuals whose work exemplifies excellence beyond traditional expectations, advancing scholarship, enriching student success, fostering innovation, and creating meaningful impact within the university and broader society.

About the Awards

The Inspiring Academic Excellence & Innovation Awards celebrate outstanding contributions in:

- Teaching and mentorship
- Research and scholarly publications
- Community service and engagement
- Creative works, innovation, and invention

Recipients represent diverse disciplines, including the Arts, Humanities, Social Sciences, Medicine, Health-related fields, and STEM, and embody Howard University's commitment to academic distinction and societal advancement.

Location: The Interdisciplinary Research Building, Multipurpose Room

SATURDAY, APRIL 25

8:30 AM – 5:00 PM

13th Mid-Atlantic Student Colloquium on Speech, Language and Learning (MASC-SLL 2026)

The 13th Mid-Atlantic Student Colloquium on Speech, Language and Learning (MASC-SLL 2026) is a one day event bringing together students, postdocs, faculty and researchers from universities and industry in the Mid-Atlantic area. The colloquium is an opportunity for students and postdocs to present preliminary or completed work and to network with other researchers working in related fields.

Location: The Interdisciplinary Research Building

MONDAY, APRIL 27

12:00 PM – 5:00 PM

How Fast Can We Go? How much Energy Can We Generate

RESEARCH MONTH 2026 ACTIVITIES

and Control?

Workshop facilitators: Mae Jemison, MD. and Sonya Smith, Ph.D.

Achieving interstellar velocities within human-reasonable timeframes requires propulsion, energy generation, storage, and control capabilities that approach the limits of modern physics and extend beyond current engineering practices. While no known physical law strictly precludes relativistic travel, the technological, energetic, and systems-integration challenges are significant. This April 2026 workshop at Howard University will convene a cross-disciplinary peer group to define a framework for a “100 Year Starship Crucible”—establishing criteria for interstellar propulsion and energy architectures that embed tactical autonomy as a core enabling capability. The workshop will examine propulsion concepts spanning existing systems, 10–30-year developmental horizons, and theoretical propositions. In each domain, tactical autonomy will be treated as an architectural requirement.

Astronaut Mae Jemison and RITA UARC Executive Director Sonya Smith will lead a discussion with participants that include propulsion researchers (current, advanced, and exotic), experts in high-energy physics and materials, specialists in autonomy and AI/ML, communication and navigation engineers, and scholars from adjacent fields whose insights may reveal non-traditional solutions.

Speakers:

Mae Jemison, MD, Former NASA Astronaut & Educator

Sonya Smith, Ph.D., Professor, Mechanical Engineering & Executive Director, RITA UARC

Location: The Interdisciplinary Research Building, Multipurpose Room

TUESDAY, APRIL 28

12:00 PM – 5:00 PM

How Fast Can We Go? How much Energy Can We Generate

and Control?

Workshop facilitators: Mae Jemison, MD. and Sonya Smith, Ph.D.

Achieving interstellar velocities within human-reasonable timeframes requires propulsion, energy generation, storage, and control capabilities that approach the limits of modern physics and extend beyond current engineering practices. While no known physical law strictly precludes relativistic travel, the technological, energetic, and systems-integration challenges are significant. This April 2026 workshop at Howard University will convene a cross-disciplinary peer group to define a framework for a “100 Year Starship Crucible”—establishing criteria for interstellar propulsion and energy architectures that embed tactical autonomy as a core enabling capability. The workshop will examine propulsion concepts spanning existing systems, 10–30-year developmental horizons, and theoretical propositions. In each domain, tactical autonomy will be treated as an architectural requirement.

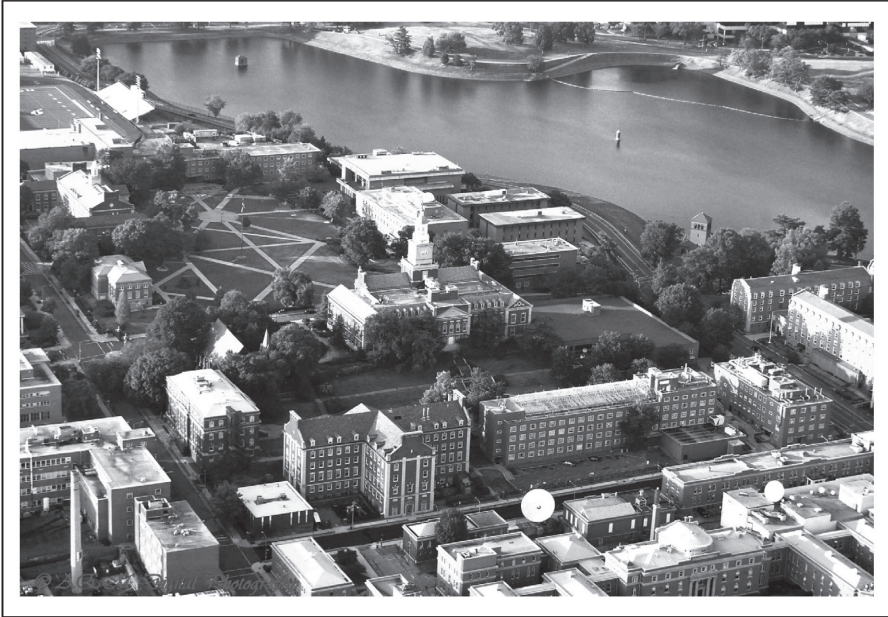
Astronaut Mae Jemison and RITA UARC Executive Director Sonya Smith will lead a discussion with participants that include propulsion researchers (current, advanced, and exotic), experts in high-energy physics and materials, specialists in autonomy and AI/ML, communication and navigation engineers, and scholars from adjacent fields whose insights may reveal non-traditional solutions.

Speakers:

Mae Jemison, MD, Former NASA Astronaut & Educator

Sonya Smith, Ph.D., Professor, Mechanical Engineering & Executive Director, RITA UARC

Location: The Interdisciplinary Research Building, Multipurpose Room



**THE ARMOUR J. BLACKBURN UNIVERSITY CENTER
THURSDAY, APRIL 30, 2026**

PROGRAM

7:00 – 8:30 AM

Registration & Continental Breakfast

The Ballroom

8:30 – 9:00 AM

Opening Remarks

Kim M. Lewis, Ph.D.

Vice President for Research & Chief Research Officer

HOWARD UNIVERSITY

RESEARCH SYMPOSIUM

PRESENTATIONS

APRIL 30, 2026

9:30 AM – 12:00 PM

Poster Presentations

Oral Presentations

Physical Sciences &
Engineering
Translational & Clinical
Sciences
Biological & Biomedical
Sciences
Environmental Sciences
Humanities

Humanities
Social Sciences
Business
Creative Arts & Design
Ethics, Law & Religion
Education & Outreach
Translational & Clinical Sciences

12:00 – 1:00 PM

Lunch

1:00 PM – 5:00 PM

Poster Presentations

Oral Presentations

Humanities
Social Sciences
Business
Creative Arts & Design
Ethics, Law & Religion
Education & Outreach

Physical Sciences & Engineering
Translational & Clinical Sciences
Biological & Biomedical Sciences
Humanities
Social Sciences
Business
Environmental Sciences & Studies

HOWARD UNIVERSITY

RESEARCH SYMPOSIUM

11:30 AM – 1:00 PM

Translating Science for Impact: Engaging the Public, Press, Podcasts and Policymakers

Join us for the expert-led session offered by the Howard University Office of University Communications. Attendees will build practical skills for translating complex scientific concepts into compelling communications that demonstrate that value of science to the public and policy makers. Learn tips for clear, audience-friendly language and best practices for serving as an expert guest for multiple platforms such as on-air, print, and podcast interviews. Featured Howard University Office of University Communications Experts include Lydia Sermons, Vice President of University Communications; Carol Wilkerson, Director of Media Relations and Cedric Mobley, Assistant Vice President of Strategic University Communications. This event is sponsored by the Howard University Research Centers in Minority Institutions

Speakers:

Location: The Armour J. Blackburn Center

12:00 PM – 1:00 PM

Dow Scholars Undergraduate Research (SURE) Seminar

This symposium will feature research technical talks and networking opportunities with Dow Scientists. The Dow SURE Scholars will also present their research presentations at the Research Symposium.

Location: The Armour J. Blackburn Center, Reading Lounge

FRIDAY, MAY 1, 2026

HOWARD UNIVERSITY

RESEARCH SYMPOSIUM

7:00 – 8:30 AM

Registration & Continental Breakfast

The Ballroom

8:30 – 9:00AM

Greetings

Wayne A.I. Frederick, MD, MBA. , Interim President

Opening Remarks

Kim M. Lewis, Ph.D.

Vice President for Research & Chief Research Officer

PRESENTATIONS

MAY 1, 2026

9:00 AM – 12:00 PM

Poster Presentations

Oral Presentations

Biological & Biomedical
Sciences

Environmental Sciences

Physical Sciences &
Engineering

Translational & Clinical
Sciences

Biological & Biomedical Sciences
Environmental Sciences & Studies

Humanities

Physical Sciences & Engineering

Social Sciences

Translational & Clinical Sciences

12:00 – 1:00 PM

Lunch

HOWARD UNIVERSITY

RESEARCH SYMPOSIUM

1:00 PM – 5:00 PM

Poster Presentations

Oral Presentations

Social Sciences

Biological & Biomedical Sciences

Environmental Sciences & Studies

Physical Sciences & Engineering

10:00 AM – 11:30 AM

Annenberg Honors Program Research Day Panel- Framing the Shift: Race, Representation, and the Boundaries of Free Expression

Join the Annenberg Program at the Cathy Hughes School of Communications for a timely and thoughtprovoking panel discussion examining how media representations of Black and Latino communities are evolving amid contemporary social and political change. Focusing on news, entertainment, and digital media, this session explores how portrayals are constructed, challenged, and reimagined across platforms. Panelists will examine the forces shaping these narratives—from journalistic practices and institutional norms to creative decisionmaking and audience engagement. Central to the discussion is the relationship between media representation and principles of free expression, including key First Amendment considerations. Panelists will address how media organizations navigate the rights and responsibilities of speech, how public discourse influences visibility and framing, and how creators and audiences are driving new approaches to storytelling in an increasingly complex media landscape. This event offers valuable insights for students, faculty, media professionals, and anyone interested in the intersections of communication, culture, and constitutional principles in today's media environment.

Speakers:

Tatiana Allen, Junior Annenberg Honors Scholar

Mesi Bakari Walton, Ph.D., Assistant Professor, Department of World Languages and Culture

Beylul Russon, Ph.D. Candidate, Annenberg Honors Program Assistant

HOWARD UNIVERSITY

RESEARCH SYMPOSIUM

Loren Saxton-Coleman, Ph.D., Assistant Professor,
Department of Communication, Culture & Media

Jennifer Thomas, Ph.D., Associate Professor, Anneberg Honors
Program Director & Moderator

Location: The Armour J. Blackburn Center, Gallery Lounge

10:30 AM – 3:30 PM

Human-Centered Artificial Intelligence (HCAI) Institute Symposium

Howard University's Human-Centered Artificial Intelligence (HCAI) Institute invites you to its Annual Symposium. This session will feature demonstrations of the Tactical Decision-Making Under Stress (TADMUS) large language model (LLM) project, including efforts to transform LLM outputs into extended reality environments that enhance decision-making under high-stress conditions. The session will also explore research on the impacts of stress, perception, comprehension, and cognition on the warfighter. Participants will experience live demonstrations, engage in interactive discussions, and provide feedback to help refine and improve the warfighter experience. For those unable to attend, all presentations will be recorded and made available on the project's website.

Speakers:

Saurav Aryal, Ph.D., Senior Research Scientist, HCAI

Jeremy Blackstone, Ph.D., Assistant Professor, Computer Science

Jaye Nias Ph.D., Senior Research Scientist, HCAI

Simone Smarr, Ph.D., Senior Research Scientist, HCAI

Gloria Washington, Ph.D., Associate Professor, Computer Science & Director, HCAI

Lucretia Williams, Ph.D., Senior Research Scientist, HCAI

Location: The Armour J. Blackburn Center, Reading Lounge

MONDAY, MAY 4

HOWARD UNIVERSITY

RESEARCH SYMPOSIUM

9:00 AM – 5:00 PM

Research to Policy Convening: Drivers & Solutions to Wealth Inequality

Howard University's WEALTH Institute will host Research to Policy: Drivers & Solutions to Wealth Inequality -- the inaugural convening that will bring together leading researchers, policy experts, advocates, and community leaders to explore evidence-based strategies to address the persistent drivers of the Black wealth gap. Through a series of discussions and collaborative exchanges, participants will examine how interconnected systems—including housing stability, inheritance and estate planning, health outcomes, and access to legal and financial resources—shape economic mobility and long-term wealth building. The convening will highlight critical research, elevate lived experiences, and identify practical policy pathways that can advance equity and opportunity. Designed for researchers, policymakers, nonprofit leaders, students, and community partners, this convening will create space for interdisciplinary dialogue and collaboration focused on translating research into actionable policy solutions.

Location: Interdisciplinary Research Building, Multipurpose Room

WEDNESDAY, MAY 6

5:00 PM – 9:00 PM

Howard University Undergraduate Research Journal Awards Ceremony (Ukweli)

As part of Howard University Research Month, the Undergraduate Research Journal Awards celebrate the outstanding scholarship and contributions of undergraduate researchers whose work has been published in the Howard University Undergraduate Research Journal (HUURJ). This event recognizes excellence in research, critical thinking, and academic writing, highlighting the impactful work of students across various disciplines.

Location: Interdisciplinary Research Building, Multipurpose Room

ORAL PRESENTATIONS

APRIL 30, 2026

SESSION I

9:00 AM – 10:00 AM | THE GALLERY LOUNGE | PHYSICAL SCIENCES & ENGINEERING

Oluwaseun Adeyeye, Undergraduate Student, Physical Sciences & Engineering,,The Gallery Lounge, 4/30/2026, 9:00 AM - 10:00 AM
Machine Learning–Assisted Raman Spectroscopy for Classification of Lunar Analog Minerals.

Malcolm Bogroff, Undergraduate Student, Physical Sciences & Engineering,,The Gallery Lounge, 4/30/2026, 9:00 AM - 10:00 AM
Networking With Light: The Theta-Multimode Interference Cavity

Sean Clemons, Undergraduate Student, Physical Sciences & Engineering,,The Gallery Lounge, 4/30/2026, 9:00 AM - 10:00 AM
Simulating Fluid Flow Around Obstacles Using Physics-Informed Neural Networks

Kayin Davis, Undergraduate Student, Physical Sciences & Engineering,,The Gallery Lounge, 4/30/2026, 9:00 AM - 10:00 AM
Thermal Analysis for Balloon-Borne Payload – Cryostat Gondola

9:00 AM – 10:00 AM | TRUTH & SERVICE | ROOM 148 | SOCIAL SCIENCES

Beza Afework, Graduate Student, Social Sciences,,Truth & Service - Room 148, 4/30/2026, 9:00 AM - 10:00 AM
Losing Market Access, Losing Jobs: The Impact of AGOA Suspension on Industrial Employment

Kessonga Allen, Undergraduate Student, Social Sciences,,Truth & Service - Room 148, 4/30/2026, 9:00 AM - 10:00 AM
No Taxation Without Representation: Voter Apathy and Information Overload

Tatiana Allen, Undergraduate Student, Social Sciences,,Truth & Service - Room 148, 4/30/2026, 9:00 AM - 10:00 AM
Black Love on Screen: Exploring the Impact on Black Women and Intimate Partner Violence

Arielle Alouidor, Graduate Student, Humanities,,Truth & Service - Room 150,
4/30/2026, 9:00 AM - 10:00 AM
Migration as Part of Danticat's Revolutionary Inheritance

Randy Bumpers, Graduate Student, Education & Outreach,,Truth & Service - Room 150, 4/30/2026, 9:00 AM - 10:00 AM
AI on the Yard: A Mixed Methods Study of Faculty Attitudes Toward the Adoption of Artificial Intelligence in Higher Education Across Schools of Education at HBCUs

Michael Bryant, Professional Student, Ethics, Law & Religion,,Truth & Service - Room 150, 4/30/2026, 9:00 AM - 10:00 AM
Gender, Theology, and Social Development: The Work of the Circle of Concerned African Women Theologians

Erinn Carter, Graduate Student, Education & Outreach,,Truth & Service - Room 150, 4/30/2026, 9:00 AM - 10:00 AM
A 21st Century Title IX: Critical Discourse Analysis of Higher Education Institutional Responses to Tennessee v. Cardona

Manal Alyami, Graduate Student, Biological & Biomedical Sciences,,The Forum, 4/30/2026, 9:00 AM - 10:00 AM
A Whole-Brain Analysis of Glial-Neuronal Coordination During Sensorimotor Integration

Olabisi Atofarati, Graduate Student, Biological & Biomedical Sciences,,The Forum, 4/30/2026, 9:00 AM - 10:00 AM
When Waters Pollute, Microbiomes Shift: Examining the Impact of Environmental Degradation on the Gut Microbiome of a Commonly Consumed Fish in Africa.

Nahom Bekele, Graduate Student, Biological & Biomedical Sciences,,The Forum, 4/30/2026, 9:00 AM - 10:00 AM
Effects of pH on HIV-1 trapping by Porcine Gastric Mucin (PGM II)

Amna Bhatti, Graduate Student, Biological & Biomedical Sciences,,The Forum, 4/30/2026, 9:00 AM - 10:00 AM
Establishing a cellular model to assess molecular and synaptic changes associated with autism spectrum disorder

Fikru Bedada, Junior Faculty/ Lecturer/ Instructor, Biological & Biomedical Sciences, Digital Auditorium, 4/30/2026, 9:30AM - 10:30 AM
SB100X transposase mediated transgene delivery in cardiac myocytes in vitro and in vivo

Gagandeep Kaur, Junior Faculty/ Lecturer/ Instructor, Biological & Biomedical Sciences, Digital Auditorium, 4/30/2026, 9:30AM - 10:30 AM
Biopotency and surrogate assays to validate the immunomodulatory potency of extracellular vesicles derived from mesenchymal stem/stromal cells for the treatment of experimental autoimmune uveitis

Malick Kebe, Junior Faculty/ Lecturer/ Instructor, Biological & Biomedical Sciences, Digital Auditorium, 4/30/2026, 9:30AM - 10:30 AM
Model Comparison in High Agreement Regimes

Shaolei Teng, Senior Faculty, Biological & Biomedical Sciences, Digital Auditorium, 4/30/2026, 9:30AM - 10:30 AM
ACE2 Variants and Interface Peptides Define Host–Virus Binding and Therapeutic Potential

Busra Agcayazi, Junior Faculty/ Lecturer/ Instructor, Business, Reading Lounge, 4/30/2026, 9:30 AM - 10:30 AM
Foreign Experience of Acquirer CEOs and Shareholder Returns

Claire Cha, Junior Faculty/ Lecturer/ Instructor, Business, Reading Lounge, 4/30/2026, 9:30 AM - 10:30 AM
Does Happiness Pay? The Causal Link Between Salesperson Job Satisfaction and Performance

Raimi Gbadamosi, Senior Faculty, Creative Arts & Design, Reading Lounge, 4/30/2026, 9:30 AM - 10:30 AM
a million dots

Stephanie Leonard, Junior Faculty/ Lecturer/ Instructor, Business, Reading Lounge, 4/30/2026, 9:30 AM - 10:30 AM
Funding Women Entrepreneurs in Africa: A Systematic Literature Review

SESSION II

10:00 AM – 11:00 AM | THE GALLERY LOUNGE | PHYSICAL SCIENCES & ENGINEERING

Kojo Osei-ntansah, Undergraduate Student, Physical Sciences & Engineering,,The Gallery Lounge, 4/30/2026, 10:00 AM - 11:00 AM
Development of Autonomous Strategies for High Resolution Data Acquisition For sUAS-Based Atmospheric Research

Quentin Taylor, Undergraduate Student, Physical Sciences & Engineering,,The Gallery Lounge, 4/30/2026, 10:00 AM - 11:00 AM
Measuring the Residual Resistivity Ratios of Superconductive Materials at Unexplored Temperature Ranges

Aidan Talley, Undergraduate Student, Physical Sciences & Engineering,,The Gallery Lounge, 4/30/2026, 10:00 AM - 11:00 AM
Visualizing Flow Effects on Quadcopter

Jordan Sexton, Undergraduate Student, Physical Sciences & Engineering,,The Gallery Lounge, 4/30/2026, 10:00 AM - 11:00 AM
Raman Spectroscopy of Graphene Quantum Dots

10:00 AM – 11:00 AM | TRUTH & SERVICE | ROOM 148 | SOCIAL SCIENCES

Ambachew addisu Anjulo, Graduate Student, Social Sciences,,Truth & Service - Room 148, 4/30/2026, 10:00 AM - 11:00 AM
The African Union in Multilateral Diplomacy: Institutional Strategies, Constraints, and Policy Influence in Global Governance

Meshai Anthony, Graduate Student, Social Sciences,,Truth & Service - Room 148, 4/30/2026, 10:00 AM - 11:00 AM
The Effects of Self-efficacy and Coping Strategies on the Relationship between Stress and Psychological Well-bieng among Mother 's Caring for Minors

Samia Bell, Undergraduate Student, Social Sciences,,Truth & Service - Room 148, 4/30/2026, 10:00 AM - 11:00 AM
The Complex Reality of African American Mental Health: Beyond the Terminology

Elle Butler, Graduate Student, Social Sciences,,Truth & Service - Room 148, 4/30/2026, 10:00 AM - 11:00 AM
The Pursuit of Purpose: Developmental Implications of Psychosocially Toxic Events on Black Emerging Adults' Risky Behavior Involvement and Self-Actualization

10:00 AM – 11:00 AM | TRUTH & SERVICE | ROOM 150 | HUMANITIES

Marie cherline Chery, Graduate Student, Humanities,, Truth & Service - Room 150,
4/30/2026, 10:00 AM - 11:00 AM
Looking Back at Bratz: Advertising, the Oppositional Gaze, and Black Girl Spectatorship

Kamara Daniel, Graduate Student, Education & Outreach,, Truth & Service - Room 150,
4/30/2026, 10:00 AM - 11:00 AM
Comparative Analysis of the Zero Sugar Behaviour Change Campaigns against NCDs: 90-day (2024) vs 60-day (2025), Social Media Campaign, Uganda

Emily Duru, Graduate Student, Humanities,, Truth & Service - Room 150, 4/30/2026,
10:00 AM - 11:00 AM
Narratives of Gendered Migration and the Desire for Female Subjectivity in Toni Morrison, Buchi Emecheta, and Etaf Rum

Jaelle Faison, Graduate Student, Education & Outreach,, Truth & Service - Room 150,
4/30/2026, 10:00 AM - 11:00 AM
Behind the Veil: The Impact of System-Justifying Beliefs and Race Ideologies on Black Student Engagement in Intragroup Dialogue

10:30 AM – 11:30 AM | DIGITAL AUDITORIUM | TRANSLATIONAL & CLINICAL SCIENCES

Sanjana Hossain, Junior Faculty/ Lecturer/ Instructor, Physical Sciences & Engineering,
Digital Auditorium, 4/30/2026, 10:30 AM - 11:30 AM
Has the 'New Normal' Arrived? A Multilevel Investigation into the Temporal Stability of the Determinants of Bike-Share Demand

Amber Kimble, Junior Faculty/ Lecturer/ Instructor, Translational & Clinical Sciences,
Digital Auditorium, 4/30/2026, 10:30 AM - 11:30 AM
Development of a protocol to transform and detect CRO-resistant Neisseria gonorrhoeae harboring the mosaic penA60 allele

10:00 AM – 11:00 AM | THE FORUM | BIOLOGICAL & BIOMEDICAL SCIENCES

Julia Biantey, Graduate Student, Biological & Biomedical Sciences,, The Forum,
4/30/2026, 10:00 AM - 11:00 AM
Impact of High-Fructose and High-Fat Diets on Hypothalamic Insulin Signaling in Hepatic PKCε Heterozygous Male Mice

Melissa Constantin, Graduate Student, Biological & Biomedical Sciences,, The Forum,
4/30/2026, 10:00 AM - 11:00 AM
Determination of the role of dPGC-1/Spargel in female fertility and oogenesis in Drosophila

Kaci Craft, Graduate Student, Biological & Biomedical Sciences,,The Forum,
4/30/2026, 10:00 AM - 11:00 AM

Lipid Droplets as a Mechanism for Dengue Virus Replication: Analysis of Subcellular Interactions and Metabolic Reprogramming

Sayeeda Habib, Graduate Student, Biological & Biomedical Sciences,,The Forum,
4/30/2026, 10:00 AM - 11:00 AM

Effects of Vitamin D Levels, Obesity, Hypertension, and Elevated Inflammatory Markers on Mortality and Hospital Stay of COVID-19 Patients

10:30 AM – 11:30 AM | THE READING LOUNGE | BUSINESS

Akosua Adoma Owusu, Junior Faculty/ Lecturer/ Instructor, Creative Arts & Design,,Reading Lounge, 4/30/2026, 10:30 AM - 11:30AM

African Cinema Preservation, Diasporic Memory, and Practice-Based Filmmaking: Damn the Man, Save the Rex!

Robert Lyons, Senior Faculty, Business, Reading Lounge, 4/30/2026, 10:30 AM - 11:30AM

Is it worth it? The NFL's schedule expansion: A profit maximization examination

Carolyn Malachi, Junior Faculty/ Lecturer/ Instructor, Creative Arts & Design,,Reading Lounge, 4/30/2026, 10:30 AM - 11:30AM

Lullaby for Èbùn: A Practice-Based Investigation of Immersive Sound, Memory, and Maternal Experience

Harold Mcdougall, Senior Faculty, Social Sciences, Reading Lounge, 4/30/2026, 10:30 AM - 11:30AM

Beyond Ego, Hierarchy, Injustice and Incoherence: Toward Community Power and Collective Peace

SESSION III

11:00 AM – 12:00 PM | TRUTH & SERVICE | ROOM 150 | HUMANITIES

Kenja-rae Farquharson, Graduate Student, Humanities,,Truth & Service - Room 150,
4/30/2026, 11:00 AM - 12:00 PM

The Making of Moses – The Haunting of Harriet: A Critical Hauntology

Marja Lankinen, Graduate Student, Humanities,,Truth & Service - Room 150,
4/30/2026, 11:00 AM - 12:00 PM

“Willa, Gloria, and Naylor’s Reader: Subversive Archivists are Everywhere in Gloria Naylor’s Linden Hills”

Christina Jones, Graduate Student, Humanities,,Truth & Service - Room 150,
4/30/2026, 11:00 AM - 12:00 PM

Archival pre-dissertation research on the everyday resistance of enslaved women in the antebellum American South

Morgan Moore, Graduate Student, Education & Outreach,,Truth & Service - Room 150,
4/30/2026, 11:00 AM - 12:00 PM

Beyond Words: Communication, Culture & Global Health Outcomes

11:00 AM – 12:00 PM | TRUTH & SERVICE | ROOM 148 | SOCIAL SCIENCES

Amaria Clark, Graduate Student, Social Sciences,,Truth & Service - Room 148,
4/30/2026, 11:00 AM -12:00 PM

Affirming or Harming? Exploratory analysis of restraint usage among incarcerated youth

Dejamarie Crozier, Graduate Student, Social Sciences,,Truth & Service - Room 148,
4/30/2026, 11:00 AM -12:00 PM

Designing Ethical AI for Marginalized Communities: A Community-Engaged Large Language Model (LLM) Interview System in Pediatric Asthma Research

Zoe Cummings, Undergraduate Student, Social Sciences,,Truth & Service - Room 148,
4/30/2026, 11:00 AM -12:00 PM

I'm Just a Girl: The Effect of Pop Culture's Adaptation of Anti-Feminist Rhetoric on Gen-Z and Millennial Women in the Digital Age

Ramyla Dahmer, Undergraduate Student, Social Sciences,,Truth & Service - Room 148,
4/30/2026, 11:00 AM -12:00 PM

Predictors of Improvement in Autistic Adults Following a Remote Mindfulness-Based Intervention

11:00 AM – 12:00 PM | DIGITAL AUDITORIUM | EDUCATION & OUTREACH

Chimene Castor, Senior Faculty, Education & Outreach, Digital Auditorium, 4/30/2026,
11:30 AM - 12:00 PM

Transforming Global Nutrition and Dietetics Education: A Strategic Collaboration between Howard University and Quirino State University

Xinbin Gu, Senior Faculty, Education & Outreach, Digital Auditorium, 4/30/2026,
11:30 AM - 12:00 PM

Workforce Representation and Service in Shortage Areas: Outcomes of an HUCD Dental Education Model (2004–2024)

11:30 AM – 12:00 PM | READING LOUNGE | HUMANITIES

Monique Major, Junior Faculty/ Lecturer/ Instructor, Humanities, Reading Lounge, 4/30/2026, 11:30 AM - 12:00 PM
A Proposed Conceptual Model Linking Quiltmaking and Health

Alla Tovares, Senior Faculty, Humanities, Reading Lounge, 4/30/2026, 11:30 AM - 12:00 PM
Linguistics Across Borders: Interdisciplinary Pathways to Student Engagement, Global Learning, and Transferable Skills

11:00 AM – 12:00 PM | THE FORUM | PHYSICAL SCIENCES & ENGINEERING

Olusegun Alaba, Graduate Student, Physical Sciences & Engineering, The Forum, 4/30/2026, 11:00 AM - 12:00 PM
Energy storage in nanocomposite films of polystyrene (PS) grafted TiO₂ nanoparticles in PS matrix

Saumika Bandopadhyay, Graduate Student, Physical Sciences & Engineering, The Forum, 4/30/2026, 11:00 AM - 12:00 PM
Fano Line Shape and Chiral Phonons in Thin Films of Weyl Semimetal TaAs

Caleb Cooper, Graduate Student, Physical Sciences & Engineering, The Forum, 4/30/2026, 11:00 AM - 12:00 PM
Improving Drone-Based Air Quality Measurements Through Motion and Environmental Bias Correction

Measho Gebreyohans, Graduate Student, Physical Sciences & Engineering, The Forum, 4/30/2026, 11:00 AM - 12:00 PM
A Comparative Study of Nano- vs. Micron-Sized Fillers: Laponite and CaCO₃ in Acrylate Terpolymer Systems

11:00 AM – 12:00 PM | THE GALLERY LOUNGE | PHYSICAL SCIENCES & ENGINEERING

Khayri White, Undergraduate Student, Physical Sciences & Engineering, The Gallery Lounge, 4/30/2026, 11:00 AM - 12:00 PM
Metacognitive AI and Predictive Classification

Bailey Zalewski, Undergraduate Student, Physical Sciences & Engineering, The Gallery Lounge, 4/30/2026, 11:00 AM - 12:00 PM
Evaluating Pedestrian Safety and Accessibility Around WMATA D.C. Metrorail Stations

SESSION IV

1:00 PM – 2:00 PM | DIGITAL AUDITORIUM | TRANSLATIONAL & CLINICAL SCIENCES

Juan Carmona, Post Doc/Resident/Fellow/Research Associate, Translational & Clinical Sciences, Digital Auditorium, 4/30/2026, 1:00 PM - 2:00 PM

A Propensity-Matched TriNetX Cohort of Dual Pathway Inhibition Compared to Aspirin Alone Following Lower-Extremity Revascularization

Sunniya Iftikhar, Post Doc/Resident/Fellow/Research Associate, Biological & Biomedical Sciences, Digital Auditorium, 4/30/2026, 1:00 PM - 2:00 PM

Mucin-HIV Interactions in Cervicovaginal Lavages from BV+ and BV- Patients

Shweta Dixit, Post Doc/Resident/Fellow/Research Associate, Translational & Clinical Sciences, Digital Auditorium, 4/30/2026, 1:00 PM - 2:00 PM

Spatial characterization of tumor-immune interactions in pMMR/dMMR African American colorectal cancer using attention-based modeling

Basheer Qolomany, Junior Faculty/ Lecturer/ Instructor, Physical Sciences & Engineering, Digital Auditorium, 4/30/2026, 10:30 AM - 11:30 AM

Predicting High-Risk Colorectal Polyps in African American Patients Using Pre-Colonoscopy Features: Machine Learning Model Development and Validation

1:00 PM – 2:00 PM | TRUTH & SERVICE | ROOM 150 | CREATIVE ARTS & DESIGN, HUMANITIES

Mahsa Tahghigh, Graduate Student, Creative Arts & Design,, Truth & Service - Room 150, 4/30/2026, 1:00 PM - 2:00 PM

Reference-Free EM Validation Flow for Detecting Triggered and Always-On Hardware Trojans

Abdel Mouncharou, Graduate Student, Humanities,, Truth & Service - Room 150, 4/30/2026, 1:00 PM - 2:00 PM

“Gacaca” in Post-genocide Rwanda: The Study of the Contribution of Traditional Heritage in Post-Conflict Community Rebuilding in Africa.

Beylul Russom, Graduate Student, Humanities,, Truth & Service - Room 150, 4/30/2026, 1:00 PM - 2:00 PM

You're Not Alone: Black Generation Z Social Norms, Shared Experiences in Community, and Self-Disclosure on TikTok

Summer Tate, Graduate Student, Humanities,, Truth & Service - Room 150, 4/30/2026, 1:00 PM - 2:00 PM

The Reimagining of the Dispossessed Historical Settings in Speculative Fiction

Mwela Lufumpa, Graduate Student, Social Sciences,,Truth & Service - Room 148,
4/30/2026, 1:00 PM - 2:00 PM

Addressing Educational Inequities: Focus Group Findings Informing a Gamified Intervention Supporting First-Generation Students

Ssanyu Lukoma, Undergraduate Student, Social Sciences,,Truth & Service - Room 148,
4/30/2026, 1:00 PM - 2:00 PM

Stories That Speak: How Storytelling Shapes Public Speaking Confidence

Mariam Ly, Undergraduate Student, Social Sciences,,Truth & Service - Room 148,
4/30/2026, 1:00 PM - 2:00 PM

Emotional, Behavioral, and Somatic Outcomes of Pediatric Sickle Cell Disease: A Comparison to Thalassemia and Non-Hemoglobinopathy Controls

Madison Maynard, Undergraduate Student, Social Sciences,,Truth & Service - Room 148,
4/30/2026, 1:00 PM - 2:00 PM

America's Perception of the Black Community: Has It Been Influenced by American Television?

Sama Ghadiri gargari, Graduate Student, Physical Sciences & Engineering,,The Forum,
4/30/2026, 1:00 PM - 2:00 PM

Rheology-Driven 3D Printability of Additive-Free Protein-Starch Pastes

James Jenkins, Graduate Student, Physical Sciences & Engineering,,The Forum,
4/30/2026, 1:00 PM - 2:00 PM

Survivability Windows Taxonomy in Embedded Systems: A Multi-Dimensional Perspective

Ke Vaughn Johnson, Graduate Student, Physical Sciences & Engineering,,The Forum,
4/30/2026, 1:00 PM - 2:00 PM

Graph Theory applications on novel optical networks

Ayanna Jones, Graduate Student, Physical Sciences & Engineering,,The Forum,
4/30/2026, 1:00 PM - 2:00 PM

Utilizing Molecular Dynamics for Energy Storage Enhancement of Phase Change Materials to Increase Thermal Efficiency of Batteries

SESSION V

2:00 PM – 3:00 PM | DIGITAL AUDITORIUM | TRANSLATIONAL & CLINICAL SCIENCES

Marzia Mustamand, Post Doc/Resident/Fellow/Research Associate, Translational & Clinical Sciences,, Digital Auditorium, 4/30/2026, 2:00 PM - 3:00 PM
Optimizing Pediatric Patient Comfort: A Study of Moisture Isolation Techniques During Dental Treatments

Widny Nazaire, Post Doc/Resident/Fellow/Research Associate, Translational & Clinical Sciences, Digital Auditorium, 4/30/2026, 2:00 PM - 3:00 PM
Social Determinants of Food Insecurity in Cancer Survivorship: The Role of Marital Status and Employment Disruption

Nakul Karle, Post Doc/Resident/Fellow/Research Associate, Environmental Sciences & Studies, Digital Auditorium, 4/30/2026, 2:00 PM - 3:00 PM
Higher-Order Turbulence Statistics in the Convective Mixed Layer: Insights from Raman Lidar Water Vapor Profiles

Md Rahman, Post Doc/Resident/Fellow/Research Associate, Translational & Clinical Sciences, Digital Auditorium, 4/30/2026, 2:00 PM - 3:00 PM
Long-Term siRNA Treatment Targeting Hepatic Androgen Receptor (AR) Provides Durable Rescue of Hepatic Insulin Resistance and Excessive Gluconeogenesis in a Chronic PCOS Mouse Model

2:00 PM – 3:00 PM | TRUTH & SERVICE | ROOM 150 | HUMANITIES

Adrian Walls, Graduate Student, Humanities,, Truth & Service - Room 150, 4/30/2026, 2:00 PM - 3:00 PM
The Legacy of Toni Morrison's Birth Name, Chloe Ardelia Wofford

Joslynn White, Graduate Student, Humanities,, Truth & Service - Room 150, 4/30/2026, 2:00 PM - 3:00 PM
The Hillman Effect: Intersectional Identities, HBCU Life, and Popular Culture Through "A Different World"

Nicholas Uptgrow, Graduate Student, Humanities,, Truth & Service - Room 150, 4/30/2026, 2:00 PM - 3:00 PM
"Behind Kayfabe": A Constructivist Grounded Theory of Male Professional Wrestlers of Color's Use of Race & Ethnicity in Gimmick Development

Angelina Mcneill, Graduate Student, Social Sciences,,Truth & Service - Room 148,
4/30/2026, 2:00 PM - 3:00 PM

“He desperately wanted help” : A causal analysis of the use-of-force policy and mental health outcomes among Black emerging adults

Erin Neal, Graduate Student, Social Sciences,,Truth & Service - Room 148, 4/30/2026,
2:00 PM - 3:00 PM

Building Generational Mental Wealth: The Role of Community and Family Mental Health Literacy and Caregiver Mental Health in the Resilience and Academic Flourishing of Black Adolescents

Ryan Odita, Undergraduate Student, Social Sciences,,Truth & Service - Room 148,
4/30/2026, 2:00 PM - 3:00 PM

The Economic Future of Nigeria’s Development

Takunda Maisva, Post Doc/Resident/Fellow/Research Associate, Education & Outreach,
The Forum, 4/30/2026, 2:00 PM - 3:00 PM

Examining HBCU students’ experiences navigating professional environments

Temiloluwa Owoade, Undergraduate Student, Biological & Biomedical Sciences,,The
Forum, 4/30/2026, 2:00 PM - 3:00 PM

Exosomal miRNA as Potential Early Indicator of Diabetic Kidney Disease

Christina Twiggs, Undergraduate Student, Biological & Biomedical Sciences,,The
Forum, 4/30/2026, 2:00 PM - 3:00 PM

Characterization of the Mouse TSHR-hyt Mutant Mouse as a Potential Model for Dopaminergic Neurodegeneration and Parkinson’s Disease.

Mckenzie Williams, Undergraduate Student, Biological & Biomedical Sciences,,The
Forum, 4/30/2026, 2:00 PM - 3:00 PM

Analysis of Rewilded Mice scRNA-seq Data Reveals Variation in CD4+ and CD8+ T-cell Populations

SESSION VI

3:00 PM – 4:00 PM | DIGITAL AUDITORIUM | PHYSICAL SCIENCES & ENGINEERING

Hind Aljaddani, Post Doc/Resident/Fellow/Research Associate, Physical Sciences & Engineering, Digital Auditorium, 4/30/2026, 3:00 PM - 4:00 PM

First-Principles Study of ZnO and ZnS Quantum Dots: Phonon Confinement, Raman Signatures, and Field/Stress-Tunable Electronic Properties for Quantum Sensing and Computation Applications

Pousali Ghosh, Post Doc/Resident/Fellow/Research Associate, Physical Sciences & Engineering, Digital Auditorium, 4/30/2026, 3:00 PM - 4:00 PM

Magnetic and Magnetocaloric Properties of CuAg(SO₄)₂

y-Mohsen Izadyari, Post Doc/Resident/Fellow/Research Associate, Physical Sciences & Engineering, Digital Auditorium, 4/30/2026, 3:00 PM - 4:00 PM

Collective Quantum Effects and Heat Engine Performance in Microtubules

Victoria Vinson, Staff, Physical Sciences & Engineering, Digital Auditorium, 4/30/2026, 3:00 PM - 4:00 PM

Characterization and Mechanical Exfoliation of Graphullerene for Use in Carbon-Based Electronic Devices

3:00 PM – 4:00 PM | TRUTH & SERVICE | ROOM 148 | SOCIAL SCIENCES

Linda Silim moundene, Graduate Student, Social Sciences,,Truth & Service - Room 148, 4/30/2026, 3:00 PM - 4:00 PM

An evaluation of SCHOOL-RELATED gender-BASED violence in cameroon's schools

Shani Smith, Undergraduate Student, Social Sciences,,Truth & Service - Room 148, 4/30/2026, 3:00 PM - 4:00 PM

To Be Young, Gifted, and Black: How Popular Media Shapes Consumer Behavior in the Black Community

Assata Starks, Graduate Student, Social Sciences,,Truth & Service - Room 148, 4/30/2026, 3:00 PM - 4:00 PM

Negotiating Faith and Self-Coherence: Identity Integration Among African American Queer Late Adolescents

Ma'sha Summerville, Undergraduate Student, Social Sciences,,Truth & Service - Room 148, 4/30/2026, 3:00 PM - 4:00 PM

Kitchen Remedies: Black Abortion Practices, Politics, and Holistic Care.

3:00 PM – 4:00 PM | READING LOUNGE | BIOLOGICAL & BIOMEDICAL SCIENCES

Tyler Guest, Undergraduate Student, Biological & Biomedical Sciences, Reading Lounge, 4/30/2026, 3:00 PM - 4:00 PM

A Qualitative Exploration of Black Undergraduate Students' Acceptance of Biological Evolution at a Historically Black College and University

Kristin Lewis, Undergraduate Student, Biological & Biomedical Sciences, Reading Lounge, 4/30/2026, 3:00 PM - 4:00 PM

The Role of Scales in Flatfish Burial Using a Robotic Model

Kira Mchugh, Undergraduate Student, Biological & Biomedical Sciences, Reading Lounge, 4/30/2026, 3:00 PM - 4:00 PM

Decoding PCOS: Aligning Patient Language with Clinical Diagnosis

3:00 PM – 4:00 PM | READING LOUNGE | BIOLOGICAL & BIOMEDICAL SCIENCES

Chloe Alston, Undergraduate Student, Biological & Biomedical Sciences, Reading Lounge, 4/30/2026, 3:00 PM - 4:00 PM

Starving the Virus: Iron Chelation as Adjuvant Therapy in HIV Treatment

SESSION VII

4:00 PM – 5:00 PM | DIGITAL AUDITORIUM | ENVIRONMENTAL SCIENCES & STUDIES

Zara Campbell, Undergraduate Student, Translational & Clinical Sciences, Digital Auditorium, 4/30/2026, 4:00 PM - 5:00 PM

Discordance between Food Allergy Diagnostics Tests

Samirah Clark, Undergraduate Student, Environmental Sciences & Studies, Digital Auditorium, 4/30/2026, 4:00 PM - 5:00 PM

*Comparative In Silico Analysis of Heavy Metal Detoxification Genes in the Bald Eagle (*Haliaeetus leucocephalus*)*

Alycia Hadley, Undergraduate Student, Environmental Sciences & Studies, Digital Auditorium, 4/30/2026, 4:00 PM - 5:00 PM

Genomic Insights into the Ecological Specialization of Pangolins as Natural Insect Regulators

Jordan Mcknight, Undergraduate Student, Environmental Sciences & Studies, Digital Auditorium, 4/30/2026, 4:00 PM - 5:00 PM

*Heat and Hidden Conversations: The Altered Communication Pathways in *Mimosa Pudica**

Gbemi Odunsi, Undergraduate Student, Biological & Biomedical Sciences,
ReadingLounge, 4/30/2026, 4:00 PM - 5:00 PM
*Distance-Dependent DNA Damage and Microdosimetric Response from Actinium-225
Alpha Emissions: Implications for Targeted Alpha Therapy Design*

Faridah Mustapha, Undergraduate Student, Biological & Biomedical Sciences,
ReadingLounge, 4/30/2026, 4:00 PM - 5:00 PM
Radiation Oncology Initiative: Using Wait Time to Improve Patient Centered Care

Genesis Nyarko, Undergraduate Student, Biological & Biomedical Sciences,
ReadingLounge, 4/30/2026, 4:00 PM - 5:00 PM
*Geographic Distribution of *Phytolacca americana* and Human Exposure Risk: A
Correlation Analysis of iNaturalist and Census Data*

Kingsley Osei-karikari, Undergraduate Student, Biological & Biomedical Sciences,
ReadingLounge, 4/30/2026, 4:00 PM - 5:00 PM
*Distinct Metabolic Pathways of Hidradenitis Suppurativa and Severity-Associated
Biomarkers*

Jaden Wilks, Undergraduate Student, Social Sciences,,Truth & Service - Room 148,
4/30/2026, 4:00 PM - 5:00 PM
*Examining Exclusionary School Discipline, and the School-To-Prison Pipeline for Black
boys.*

Khalil Winzer-wilks, Undergraduate Student, Social Sciences,,Truth & Service - Room
148, 4/30/2026, 4:00 PM - 5:00 PM
*Moscow's Model of Madness: Gray Zone Warfare and the Strategic Weaponization of
Migration Against Europe*

Natalie Weathers, Graduate Student, Social Sciences,,Truth & Service - Room 148,
4/30/2026, 4:00 PM - 5:00 PM
*“how the gang pulled up to black history month””: A Critical Analysis of Rihanna’s
Maternity Style Using Black Feminist Theory*

Maddison Wells, Graduate Student, Social Sciences,,Truth & Service - Room 148,
4/30/2026, 4:00 PM - 5:00 PM
an architecture of liberation: the evolution of Black architects and the shotgun house

ORAL PRESENTATIONS

MAY 1, 2026

SESSION I

9:00 AM – 10:00 AM | DIGITAL AUDITORIUM | HUMANITIES

Margaret Asho, Undergraduate Student, Humanities, Digital Auditorium, 5/1/2026, 9:00 AM - 10:00 AM

Optimizing Humanitarian Aid in South Sudan: The Role of Data Analytics in Resource Allocation

Ophelia Brew, Undergraduate Student, Ethics, Law & Religion, Digital Auditorium, 5/1/2026, 9:00 AM - 10:00 AM

The Broken Social Contract In Marginalized Communities

Jalyn Cameron, Undergraduate Student, Humanities, Digital Auditorium, 5/1/2026, 9:00 AM - 10:00 AM

Emma Foster, Undergraduate Student, Ethics, Law & Religion, Digital Auditorium, 5/1/2026, 9:00 AM - 10:00 AM

Algorithm Augmented Acute Care: Challenges and Opportunities of AI in Emergency Medicine

9:00 AM – 10:00 AM | TRUTH & SERVICE | ROOM - 148 | SOCIAL SCIENCES

Araba Aidoo-apau, Graduate Student, Social Sciences, Truth & Service - Room 148, 5/1/2026, 9:00 AM - 10:00 AM

The Social Influence of Hip Hop in Black Communities

Leila Diallo, Undergraduate Student, Social Sciences, Truth & Service - Room 148, 5/1/2026, 9:00 AM - 10:00 AM

Wheels of Misfortune: The Automotive Decline and the Rise of Crime in Detroit, Flint, and Pontiac, Michigan (1970–2005)

Armani Durham, Undergraduate Student, Social Sciences, Truth & Service - Room 148, 5/1/2026, 9:00 AM - 10:00 AM

The Communication of Black Women with Their Natural Hair on Social Media

Gabby Ervin, Undergraduate Student, Social Sciences, Truth & Service - Room 145, 5/1/2026, 9:00 AM - 10:00 AM

Conversations Between Parents and Their Biracial Children: Their Impact on Identity and Blackness

Payton Garcia, Undergraduate Student, Social Sciences, Truth & Service - Room 145,
5/1/2026,9:00 AM - 10:00 AM
*Testing the Wage-Maximization Logic of Skilled Migration in Ghana through Panel Data
and Institutional Analysis*

Lauryn Hash, Undergraduate Student, Social Sciences, Truth & Service - Room 145,
5/1/2026,9:00 AM - 10:00 AM
*Seen but Misunderstood: An Intersectional Analysis of the Portrayal of Black Women
within Pop Culture*

9:00 AM – 10:00 AM | THE FORUM | BIOLOGICAL & BIOMEDICAL SCIENCES

Gary Henderson, Graduate Student, Biological & Biomedical Sciences, The Forum,
5/1/2026,9:00 AM - 10:00 AM
Inter-fraction and intra-fraction organ motion models for radiotherapy treatment

Chukwudi Ikegwu, Graduate Student, Biological & Biomedical Sciences, The Forum,
5/1/2026,9:00 AM - 10:00 AM
*Where Are Species Most at Risk? Machine Learning–Driven Insights into Amphibian
Diversity and Extinction Risk Across Nigeria*

Winnie Mambo, Graduate Student, Biological & Biomedical Sciences, The Forum,
5/1/2026,9:00 AM - 10:00 AM
*Integrating Machine Learning and Large-Scale Data to Reveal Multidimensional Global
Patterns of Chameleon Biodiversity*

Cayla Moore, Graduate Student, Biological & Biomedical Sciences, The Forum,
5/1/2026,9:00 AM - 10:00 AM
*The Potential of Scaffold Protein RACK1 (GNB2L1) Y248 Phosphorylation in Mediating
the Metastasis of MDA-MB231 Triple-Negative Breast Carcinoma Cells*

SESSION II

10:00 AM – 11:00 AM | DIGITAL AUDITORIUM | HUMANITIES

Destiny Givens, Undergraduate Student, Humanities, Digital Auditorium, 5/1/2026,
10:00 AM - 11:00 AM
*Oppression or Offense: The Study of How Sports Journalist and Media Backlash Impact
Black Athlete Perception*

Kaylynn Greene, Undergraduate Student, Ethics, Law & Religion, Digital Auditorium,
5/1/2026, 10:00 AM - 11:00 AM
How Psychology, Social Environment, and Religion Shape Human Identity

Kameron Hayes, Undergraduate Student, Humanities ,Digital Auditorium, 5/1/2026,
10:00 AM - 11:00 AM
Give Me That Old Time Religion

Latrese Johnson, Undergraduate Student, Humanities, Digital Auditorium, 5/1/2026,
10:00 AM - 11:00 AM
*Politics of Care: Exploring the Tradition of Black Motherhood through the Parenting of
Queer Mothers*

10:00 AM – 11:00 AM | THE FORUM | BIOLOGICAL & BIOMEDICAL SCIENCES

Imaan Muhammad, Graduate Student, Biological & Biomedical Sciences, The Forum,
5/1/2026, 10:00 AM - 11:00 AM
*The Role of Lipid Droplets in Hepatitis C Virus Infection: Viral Assembly, Host Lipid
Metabolism, and Therapeutic Potential*

Kouakou innocent N’dri, Graduate Student, Biological & Biomedical Sciences, The
Forum, 5/1/2026, 10:00 AM - 11:00 AM
*Effect of Partial Volume Correction on Lesion-Level PET Quantification in Multiple
Sclerosis*

James Galaxy Nganji, Graduate Student,
Biological & Biomedical Sciences, The Forum, 5/1/2026, 10:00 AM - 11:00 AM
*Effects of substituting serine to aspartic acid at position 177 in the allosteric site of $\Delta 1$ -
Pyrroline-5-carboxylate reductase (P5CR)*

Jude Onojah, Graduate Student, Biological & Biomedical Sciences, The Forum,
5/1/2026, 10:00 AM - 11:00 AM
*Laponite as an Efficient nanocarrier for dual delivery of curcumin and Chloroquine
Diphosphate*

10:00 AM – 11:00 AM | TRUTH & SERVICE | ROOM 148 | SOCIAL SCIENCES

Mewelau Hall, Graduate Student, Social Sciences, Truth & Service - Room 145,
5/1/2026, 10:00 AM - 11:00 AM
*On Her Level: Narratives of Black Women’s Leadership, Resilience, and Persistence in
Corporate America*

Zoey Hall, Undergraduate Student, Social Sciences, Truth & Service - Room 145,
5/1/2026, 10:00 AM - 11:00 AM
Social Determinants of Health and Depression

Robert Hill, Undergraduate Student, Social Sciences, Truth & Service - Room 145,
5/1/2026, 10:00 AM - 11:00 AM
*Digital Disruption: Exploring the Long-term Effects of AI in the Media and
Entertainment Industry*

Aniya Northern, Undergraduate Student, Social Sciences, Truth & Service - Room 145, 5/1/2026, 10:00 AM -11:00 AM
Cinematic History, Lived Memory: How Film Shapes Public Understanding of African American History

SESSION III

11:00 AM – 12:00 PM | DIGITAL AUDITORIUM | HUMANITIES

Aziza McClain-Baxter, Undergraduate Student, Ethics, Law & Religion, Digital Auditorium, 5/1/2026, 11:00 AM - 12:00 PM
Beneficence in Global Women's Health: Culturally Competent Approaches to Addressing Female Genital Mutilation

Richelle Johnson, Undergraduate Student, Humanities, Digital Auditorium, 5/1/2026, 11:00 AM - 12:00 PM
On Digital Colonialism as a Form of Epistemic Oppression

Victoria Matthews, Undergraduate Student, Ethics, Law & Religion, Digital Auditorium, 5/1/2026, 11:00 AM - 12:00 PM
Reparations at the Municipal Level: San Francisco's Proposal and Its Influence on California Policy Discourse

Chase Mitchell, Undergraduate Student, Humanities, Digital Auditorium, 5/1/2026, 11:00 AM - 12:00 PM
Trouble In Mind: Nina Simone and Gothic-Blues Expression

11:00 AM – 12:00 PM | TRUTH & SERVICE | ROOM 148 | SOCIAL SCIENCES

Morgan Hunt, Undergraduate Student, Social Sciences, Truth & Service - Room 145, 5/1/2026, 11:00 AM -12:00 PM
Social Commentary and Its Effect on Behaviors and Self Perception of Black Women

Rita Jacobs, Graduate Student, Social Sciences, Truth & Service - Room 145, 5/1/2026, 11:00 AM -12:00 PM
Articulating Racial Uplift in the Writings of Anna Julia Cooper

Gillian Joseph, Undergraduate Student, Social Sciences, Truth & Service - Room 145, 5/1/2026, 11:00 AM -12:00 PM
Who Are You Listening to? : Black LGBTQ perspectives in R&B and its influences on Black LGBTQ students attending Howard University.

Jada Johnson, Undergraduate Student, Social Sciences, Truth & Service - Room 145, 5/1/2026, 11:00 AM -12:00 PM
Dissecting The Soft Life: How Controlling Images In The Media Affect The Way Black Women Perceive Themselves

SESSION IV

1:00 PM – 2:00 PM | DIGITAL AUDITORIUM | CREATIVE ARTS & DESIGN & HUMANITIES

Abiba Monciffe, Undergraduate Student, Humanities, Digital Auditorium, 5/1/2026, 1:00 PM - 2:00 PM

Written By a Black Woman: How Doechii's Alligator Bites Never Heal Reveals the Complex Identity Construction of Black Womanhood

Esther Olaitan, Undergraduate Student, Creative Arts & Design, Digital Auditorium, 5/1/2026, 1:00 PM - 2:00 PM

Designing Recovery

Ezearia Saffold-Randolph, Undergraduate Student, Humanities, Digital Auditorium, 5/1/2026, 1:00 PM - 2:00 PM

Temporal Survival and Black Feminist Agency in Octavia Butler's Kindred: Speculative Anthropology, Afrofuturism, and Cultural Memory

Keshawna Washington, Undergraduate Student, Humanities, Digital Auditorium, 5/1/2026, 1:00 PM - 2:00 PM

All Power to the People: The Significance of Language in Social Movements

1:00 PM – 2:00 PM | THE FORUM | PHYSICAL SCIENCES & ENGINEERING

Cameron Lewis, Graduate Student, Physical Sciences & Engineering, The Forum, 5/1/2026, 1:00 PM - 2:00 PM

Quantum Corners: Improving Emergency Response with Smart Traffic Management and Quantum Sensors

Kenneth Looby, Graduate Student, Physical Sciences & Engineering, The Forum, 5/1/2026, 1:00 PM - 2:00 PM

Mechanical and Material Characterization of NASA's GRX-810

Joi Malone, Graduate Student, Physical Sciences & Engineering, The Forum, 5/1/2026, 1:00 PM - 2:00 PM

Optical and Electrical Characterization Carbon Nanostructures

Alemu Melka, Graduate Student, Physical Sciences & Engineering, The Forum, 5/1/2026, 1:00 PM - 2:00 PM

Synthesis and structural analysis of Ag(I), Cs(I), and tetrabutylammonium nido-carborane complexes via single-crystal x-ray diffraction and spectroscopy

Jaleen Kairys, Undergraduate Student, Social Sciences, Truth & Service - Room 145, 5/1/2026, 1:00 PM - 2:00 PM
The Digital Plantation?: The Influence of American Capitalism on Black Artistic Integrity and the Psychological Well-Being of Black Creatives.

Kawika Keys, Undergraduate Student, Social Sciences, Truth & Service - Room 145, 5/1/2026, 1:00 PM - 2:00 PM
Malama 'āina (To Care for the Land); A Socio-Economic Analysis of the Pu'ulani Agroforestry Restoration Project

Yasmine Lopez, Graduate Student, Social Sciences, Truth & Service - Room 145, 5/1/2026, 1:00 PM - 2:00 PM
Safety and Efficacy of Medications Used in the Management of Asthma Among Children Aged 6–12 Years (2020–2025)

Janeen Louis, Undergraduate Student, Social Sciences, Truth & Service - Room 145, 5/1/2026, 1:00 PM - 2:00 PM
Task-Shifting Mental Health Support to Resident Assistants at HBCUs: A Proposed Peer-Led Model for Expanding Access to Care

SESSION V

Jordan Benson, Professional Student, Biological & Biomedical Sciences, Digital Auditorium, 5/1/2026, 2:00 PM - 3:00 PM
Characterizing Population-Specific Genetic Variants in Susceptibility to Anaphylaxis within the All of Us Research Program

Kaelyn Gordon, Professional Student, Translational & Clinical Sciences, Digital Auditorium, 5/1/2026, 2:00 PM - 3:00 PM
Medicaid Expansion and Colorectal Cancer Survival: A Comparison Between California and Texas

Crystal Griffith, Professional Student, Translational & Clinical Sciences, Digital Auditorium, 5/1/2026, 2:00 PM - 3:00 PM
Seasons of Risk: Investigating Temporal Trends in ICI-Associated Myocarditis

Mikayla Niara Harris, Professional Student, Biological & Biomedical Sciences, Digital Auditorium, 5/1/2026, 2:00 PM - 3:00 PM
Racial Disparities In Stroke Outcomes One Year After Congenital Heart Disease Surgery In Pediatric Patients

Alana Okullo, Graduate Student, Physical Sciences & Engineering, The Forum,
5/1/2026, 2:00 PM - 3:00 PM

Development of ab initio Approaches to Study the Photogalvanic Responses in Antiferromagnetic Topological Materials

Howard Prioleau, Graduate Student, Physical Sciences & Engineering, The Forum,
5/1/2026, 2:00 PM - 3:00 PM

Form, Meaning, and Misalignment: Investigating Internal Entity Alignment to Strengthen LLM Safety

Lekwetje Ramaube, Graduate Student, Physical Sciences & Engineering, The Forum,
5/1/2026, 2:00 PM - 3:00 PM

High-Fidelity Modelling of Atmospheric Stability Effects on Offshore Wind Turbine Wake Dynamics

Vishal Thakur, Graduate Student, Physical Sciences & Engineering, The Forum,
5/1/2026, 2:00 PM - 3:00 PM

Angle-Dependent Ellipsometry for Probing Surface Conductivity in TaAs(112): A Transfer Matrix Approach

Davynte Pannell, Graduate Student, Social Sciences, Truth & Service - Room 145,
5/1/2026, 2:00 PM - 3:00 PM

Psychological Advantageousness: Hierarchical and Correlational Analysis of Beliefs and Quality of Life (QOL)

N'dyah Rathod, Undergraduate Student, Social Sciences, Truth & Service - Room 145,
5/1/2026, 2:00 PM - 3:00 PM

Impact of Social Determinants on Cancer Screenings and Medical Trust among African American Adults

Anjali Robinson-Leary, Undergraduate Student, Social Sciences, Truth & Service -
Room 145, 5/1/2026, 2:00 PM - 3:00 PM

Geographic Information Systems and the Great Dismal Maroon

Raven Shaw, Undergraduate Student, Social Sciences, Truth & Service - Room 145,
5/1/2026, 2:00 PM - 3:00 PM

Bridging Distance and Opportunity: TransMiCable's Effect on Post-Secondary Enrollment in Ciudad Bolívar

SESSION VI

3:00 PM – 4:00 PM | DIGITAL AUDITORIUM | BIOLOGICAL & BIOMEDICAL SCIENCES

Ifeoma Mba-Madubuike, Professional Student, Translational & Clinical Sciences, Digital Auditorium, 5/1/2026, 3:00 PM - 4:00 PM
Severe Hypoalbuminemia Predicts Increased 5-Year Mortality After Isolated CABG

Keyline Moreno, Professional Student, Biological & Biomedical Sciences, Digital Auditorium, 5/1/2026, 3:00 PM - 4:00 PM
Racial and Ethnic Disparities in Distant- Stage Presentation of Lung, Breast, and Colorectal Cancers, 2006–2021

Marshall Mendoza, Professional Student, Translational & Clinical Sciences, Digital Auditorium, 5/1/2026, 3:00 PM - 4:00 PM
A Propensity-Matched TriNetX Cohort of Preoperative Opioid Exposure Compared to No Opioid Exposure Following Partial Colectomy or Proctectomy

Vaisakh Nair, Professional Student, Translational & Clinical Sciences, Digital Auditorium, 5/1/2026, 3:00 PM - 4:00 PM
Follow-Up Patterns After Elevated Liver Enzymes in Young Adults: A Retrospective Cohort Study Using Real-World Data

Mohammed Sawi, Professional Student, Translational & Clinical Sciences, Digital Auditorium, 5/1/2026, 3:00 PM - 4:00 PM
A Propensity-Matched TriNetX Network Analysis of Dual vs Mono Antiplatelet Therapy Following Lower Extremity Revascularization

3:00 PM – 4:00 PM | TRUTH & SERVICE | ROOM 14 | SOCIAL SCIENCES

Kimathi Talton, Undergraduate Student, Social Sciences, Truth & Service - Room 145, 5/1/2026, 3:00 PM - 4:00 PM
Gold Mining and The Limits of State Authority in Mali

Lauren Taylor, Graduate Student, Social Sciences, Truth & Service - Room 145, 5/1/2026, 3:00 PM - 4:00 PM
Whose Recovery Counts? Lived Experiences of Wildfire Recovery in Lahaina, Hawai‘i

Mehlik Thomas, Undergraduate Student, Social Sciences, Truth & Service - Room 145, 5/1/2026, 3:00 PM - 4:00 PM
“Improving Forensics to Prevent Wrongful Convictions”

Jayda Thomas, Undergraduate Student, Social Sciences, Truth & Service - Room 145, 5/1/2026, 3:00 PM - 4:00 PM
How is She So Successful?: How Media Invalidates Black Women’s Successes with Conspiracy Theories.

3:00 PM – 4:00 PM | THE FORUM BUSINESS

Mila Chatman, Undergraduate Student, Business, The Forum, 5/1/2026, 3:00 PM - 4:00 PM

Study Hours vs Academic Performance in Business Major

Amiya Fitzgerald, Undergraduate Student, Business, The Forum, 5/1/2026, 3:00 PM - 4:00 PM

Sink or Swim: The Dual Faces of Imposter Syndrome on How Internal and External Factors Shape Professional Resilience and Avoidance

Shani Lewis, Undergraduate Student, Business, The Forum, 5/1/2026, 3:00 PM - 4:00 PM

Rethinking the Hawthorne Effect Through Race and Power: How Historical Legacies Shape Black Employees' Performance Under White Managerial Observation

Esra Omer, Undergraduate Student, Education & Outreach, The Forum, 5/1/2026, 3:00 PM - 4:00 PM

Beyond Accommodation: Confronting Systemic Ableism in Engineering Education

4:00 PM – 5:00 PM | THE FORUM BUSINESS

Aniyah Smith, Undergraduate Student, Business, The Forum, 5/1/2026, 4:00 PM - 5:00 PM

Fitting in to Stand Out: How P-O Fit Shapes Student Success at HBCUs & PWI

Karson Smith, Undergraduate Student, Business, The Forum, 5/1/2026, 4:00 PM - 5:00 PM

La Otra Economía- The Silent Force Behind Cuba's Survival

Essence Stephens, Undergraduate Student, Business, The Forum, 5/1/2026, 4:00 PM - 5:00 PM

Maslow on the Main Stage: How Hierarchy of Needs Shapes the Actor-Management Relationship

Temyaia White, Undergraduate Student, Education & Outreach, The Forum, 5/1/2026, 4:00 PM - 5:00 PM

The Impact of Parent-Child Relationships Cognitive and Social-Emotional Development

POSTER EXHIBITION

April 30, 2026

Amir Abdulgadir, Undergraduate Student, Physical Sciences & Engineering
Constraining Dark Matter In External Galaxies Using Stellar Streams

Adam Abiade, Undergraduate Student, Physical Sciences & Engineering
Exploring BIC Phenomena in Layered Van der Waals Structures

Mennwa Abouelatta, Graduate Student, Biological & Biomedical Sciences
Phenylketonuria in Egypt: Incidence, Prevalence, and Genetic Context in North Africa and the Arab World

Nour Abou-abdou, Post Doc/Resident/Fellow/Research Associate, Biological & Biomedical Sciences
Comparison of Commercial Aligners to Direct and Indirect On-Office Designed and Fabricated Aligners

Alex Abraham, Undergraduate Student, Biological & Biomedical Sciences
Synthesis of analogs of tryptophan using β -subunit of tryptophan synthase for LAT1-mediated drug delivery.

Nicholas Abram, Undergraduate Student, Physical Sciences & Engineering
When Seconds Count: A Scoping Review of Decision Support System Design for High-Stakes, Time-Pressured Environments

Le'ale Addison, Undergraduate Student, Education & Outreach
Leveraging Social Media in Secondary Education to Promote Disability Awareness and Inclusivity

Josephine Adelegan, Graduate Student, Physical Sciences & Engineering
Predictive Modeling of Permeate Flux and Fouling Behavior in Alkaline Crossflow Ultrafiltration Systems using Machine Learning

Beloved Adenuga, Graduate Student, Biological & Biomedical Sciences
Outcomes of Indwelling Pleural Catheter Placement for Heart Failure-Related Pleural Effusions: A Multicenter Retrospective Study

Tosin Adeola, Graduate Student, Biological & Biomedical Sciences
Lipidomic Profiling Of Diapausing Culex Pipiens Fed Dietary Sugars Using Ultrahigh-Resolution LC-FT-ICR MS

Michael Aderinkola, Professional Student, Translational & Clinical Sciences
Racial Disparities in Obesity Among U.S. Adult Cancer Survivors: Findings from the 2016 Medical Expenditure Panel Survey

Olatunde Adesina, Undergraduate Student, Biological & Biomedical Sciences
The Role of Microbial-Derived Short-Chain Fatty Acids in Gastrointestinal Immune Regulation

Adedamola Adeyemi, Undergraduate Student, Biological & Biomedical Sciences
Alcohol Withdrawal Seizure Susceptibility Is Associated With A Remodeling Of Mek/Erk Signaling In Rat Inferior Colliculus Neurons

Morayo Adeyemi, Graduate Student, Environmental Sciences & Studies
Human-in-the-Loop AI for Postpartum Support Among Black Women in DC

Isaac Adjei, Undergraduate Student, Physical Sciences & Engineering
Culturally Aware Multilingual Model Routing Through A Mixture-Of-Specialists Framework

Nyla Adon, Undergraduate Student, Translational & Clinical Sciences
The Inhibition of PLK4 against Melanoma Progression in BRAF/PTEN Mice Model

Zoya Afreen, Undergraduate Student, Social Sciences
An integrated Analysis of Economic and Enviromental interactions in Predicting Health Outcomes in Ghana

Kafilat Agbaje, Graduate Student, Biological & Biomedical Sciences
Formulation of a Niosomal Drug Delivery System for the Treatment of Colorectal Cancer

Lillian Agosto maldonado, Graduate Student, Social Sciences
Hashtag Activism and New York Public Housing: Exploring the Role of Social Media in Addressing NYCHA Challenges

Aseelah Ahmad, Undergraduate Student, Environmental Sciences & Studies
Coyote Density and Zoonotic Risk: A One Health Assessment of Echinococcus multilocularis in Suburban Recreational Areas

Ashley Aims, Undergraduate Student, Biological & Biomedical Sciences
Family Structures Across Time: A Generational View from the Utah Population Database

Christian Aka, Professional Student, Translational & Clinical Sciences
Diagnostic Patterns by Housing Status Among Youth Aged 16-25 with Schizophrenia Spectrum and Bipolar Disorders: A Multi-System EHR Study

Yemeli Akaya, Undergraduate Student, Biological & Biomedical Sciences
Isolation and Characterization of Bacteriophage InfiteX Infecting Mycobacterium smegmatis

Adebusola Akinola, Undergraduate Student, Biological & Biomedical Sciences
Scaffold protein RACK1 Mediated Auxin Signalling Pathways in Model Plant Arabidopsis

Mildness Akomoize, Undergraduate Student, Physical Sciences & Engineering
ASR Benchmarking for AAVE

Huda Al-bana, Professional Student, Translational & Clinical Sciences
Association of Childhood Sexual Abuse with Adult Loneliness in the United States

Anthony Alborno, Professional Student, Translational & Clinical Sciences
Retrospective Study of Pain Management in NICU Surgeries

Nathan Alexander, Junior Faculty / Lecturer / Instructor, Social Sciences
Critical Computational Geographies: Leveraging Mathematical Models to Explore Binary Classifications of Race in Neighborhood Dissimilarity

Prince Alino, Professional Student, Biological & Biomedical Sciences
Effect of GLP-1 Receptor Agonists on Atrial Fibrillation and Mortality in Anabolic Steroid Users: A Retrospective Cohort Study Using Real-World Data

Avery Allen, Graduate Student, Social Sciences
Listen to Black Women: A Critical Thematic Analysis of Black Women Political Social Media Influencers

Sydney Allison, Undergraduate Student, Translational & Clinical Sciences
The Role of Leptin Resistance in the Pathophysiology of Type 2 Diabetes in African Americans

Amirah Alqahtani, Graduate Student, Biological & Biomedical Sciences
A Comparative Machine Learning Approach to Predict 5-HMF Levels in Apple Juice After Thermal Treatment

Gadeer Alqasseri, Graduate Student, Physical Sciences & Engineering
Tuning Topological Phase Transition in Antiferromagnetic Dirac Semimetal of UOTe: Strain and Chemical Substitution

Chloe Alston, Undergraduate Student, Environmental Sciences & Studies
New Schiff Base Ligands for the Remediation of Environmental Heavy Metal

Haifa Alzahri, Graduate Student, Biological & Biomedical Sciences
Mechanism Aware Molecular Generation: LLMs Learn to Separate Orthosteric GLP 1 Agonists from PAMs via Structural Signatures

Najla Alzaid, Graduate Student, Biological & Biomedical Sciences
Exploring Large Language Models for Molecular Design

Uchenna Amaechi, Post Doc/Resident/Fellow/Research Associate, Translational & Clinical Sciences
Hidden Drivers of Hospital Utilization in Sickle Cell Disease: Smoking, Opioids, and a Case for Genotype-Informed Risk Stratification

Marvis Amayor, Graduate Student, Environmental Sciences & Studies
Harnessing the Opportunities for Artificial Intelligence in Healthcare While Considering Ethical Implications: A Systematic Review

Marvis Ameyaw, Graduate Student, Environmental Sciences & Studies
Climate Change and Human Health: Effects of Natural Disasters on Vulnerable Populations

Gloria Ampiah-danso, Graduate Student, Physical Sciences & Engineering
Modeling HIV-Infected T-Cell Dynamics with Non-Exponential Probability Distributions

Lauryn Anderson, Undergraduate Student, Social Sciences
The Drastic Effects of Fatherlessness on Children

Eddie Anderson, Undergraduate Student, Environmental Sciences & Studies
Analyzing the Effects of Particle Size and UV Irradiation on Industry-Specific Biochar for Methylene Blue Uptake, Via Camera-Based AI Models

Garrison Andrews, Undergraduate Student, Social Sciences
U.S. Foreign Assistance and Militancy in West Africa

Cirace Annan, Undergraduate Student, Social Sciences
Undershadowed: Black Women Sex Trafficking and the Me Too International Movement

Malcolm Anthony, Graduate Student, Biological & Biomedical Sciences
Structural Analysis of Missense Mutations on the Stability of the DISC1 Scaffold Protein

Tatiana Anthony, Graduate Student, Social Sciences
Interconnectedness as a Pathway to Black joy

Ogechi Anyamele, Undergraduate Student, Physical Sciences & Engineering
Evaluating Perceptions of Naturalness in AI-Generated Speech

Anaiah Armstrong, Undergraduate Student, Biological & Biomedical Sciences
*COI Barcoding of *Pheidole tysoni* & *Tapinoma sessile**

Surangana Aryal, Undergraduate Student, Physical Sciences & Engineering
AI4PC-Howard University at SemEval-2026 Task 9: Multilingual Polarization Detection via Large Language Model Inference

Susie Asamoah, Professional Student, Social Sciences
Understanding Medication Adherence in Immigrant Life: Building a Conceptual Framework

Kwaku Asare, Undergraduate Student, Physical Sciences & Engineering
Ensemble Voting and Meta-Learning for Homonym Disambiguation: A Hybrid Approach to SemEval 2026 Task 5

Yusuf Ashktorab, Graduate Student, Translational & Clinical Sciences
Introducing RALLM-O: A Retrieval-Augmented Large Language Model for Adjunctive Obesity Management

Stephanie Audain, Graduate Student, Translational & Clinical Sciences
Bridging the Gap: Operational and Policy Strategies to Improve Maternal Health Outcomes for Incarcerated Birthing People

Chelsea Austin, Undergraduate Student, Biological & Biomedical Sciences
*Conserved Pathways: Evaluating the Impact of Microbiota Composition on Metabolic Dysfunction in *Drosophila melanogaster**

Kathleen Awason, Undergraduate Student, Environmental Sciences & Studies
Spatial Analysis of PFAS Discharge from Wastewater Treatment Plants into Effluent Receiving Streams

Kiitan Ayandosu, Undergraduate Student, Physical Sciences & Engineering
Evidence Guided Abductive Scoring with Option Conditioned Retrieval and Constrained LLM Evaluation

Hope Ayim, Undergraduate Student, Biological & Biomedical Sciences
Adapting FEAST for High-Dimensional Microglial Profiling in Alzheimer's and Beyond

Serena Azandegbe, Undergraduate Student, Biological & Biomedical Sciences
*Mapping Neurotoxic Potential: A Spatial Analysis of *Solanum elaeagnifolium* and Acetylcholinesterase Inhibition Risk in Human Modified Landscapes*

Lashaun Baddol, Undergraduate Student, Physical Sciences & Engineering
Psycholinguistic Augmentation for Conspiracy Detection using ModernBERT

Ama Baffour, Undergraduate Student, Social Sciences
The Threat of Political Corruption to Environmental Sustainability in West Africa

Suyash Bajpai, Post Doc/Resident/Fellow/Research Associate, Physical Sciences & Engineering
Morphology-Driven Computation in the Slime Mold: TSP Solution Dynamics and Computational Limits

Wardah Bajwa, Post Doc/Resident/Fellow/Research Associate, Translational & Clinical Sciences
Underutilization Of Advanced Ibd Therapies And Delayed Escalation In A Minority-Predominant Urban Population

Kyla Barnes, Undergraduate Student, Biological & Biomedical Sciences
*Comparative Public Health Implications of *Solenopsis invicta*: Immunologic Outcomes of Envenomation Versus Mechanical Vector Potential*

Kyla Baron, Professional Student, Biological & Biomedical Sciences
Rehabilitation Utilization and Post-Amputation Outcomes Among Patients with Type 2 Diabetes

Padmamalini Baskaran, Senior Faculty, Biological & Biomedical Sciences
Geriatric Sepsis: Pharmacist-Led Strategies to Reduce Risk and Improve Outcomes

Na'jae Batts, Undergraduate Student, Education & Outreach
Gun Violence Exposure and Uts Impact on College Students' Academic and Psychological Well-Being

Kierissa Beckles, Undergraduate Student, Biological & Biomedical Sciences
*Phenotypic Plasticity and Urban Adaptation of *Sciurus carolinensis* in the Anthropogenic Landscape of Washington, D.C.*

Brianna Bell, Professional Student, Biological & Biomedical Sciences
Racial Disparities in Repeat Cesarean Section after TOLAC: A TriNetX propensity-matched retrospective cohort study

Taylor Bell, Professional Student, Translational & Clinical Sciences
Exposure to Childhood and Community Violence May be Associated to Cardiovascular Disease Risk: Biological and Behavioral Sex-Specific Pathways

Tamara Bell amison, Graduate Student, Education & Outreach
Burnout, Depression, and Tech as Support Tools for K-12 Educator Wellbeing

Nylah Bennett, Undergraduate Student, Biological & Biomedical Sciences
Seasonal Variation in Spotted Lanternfly Sightings: Implications for Ecosystem Stability and Crop Health

Kaylah Benton, Undergraduate Student, Biological & Biomedical Sciences
Metabolic Imaging Biomarkers in Inflammatory Myofibroblastic Tumors: From Diagnosis to Prognosis

Ron Berasa, Graduate Student, Translational & Clinical Sciences
Targeted Nanoparticle Delivery of miR-144/451 Modulator to Erythrocytes for Mitigating Oxidative Stress in Type 2 Diabetes and aging

Yogesh Bhattarai, Graduate Student, Environmental Sciences & Studies
Advancing flood inundation prediction accuracy and computational efficiency using artificial intelligence

Sosna Birra, Graduate Student, Physical Sciences & Engineering
Global Optimization Approaches for Parameter Estimation in Nonlinear Within-Host HIV Models

Mekdem Bisrat, Post Doc/Resident/Fellow/Research Associate, Translational & Clinical Sciences
Racial Differences in Obstructive Sleep Apnea Diagnosis After Acute Myocardial Infarction or Cerebral Infarction

Ida Bittaye, Undergraduate Student, Translational & Clinical Sciences
Food Insufficiency

Carl Boateng, Professional Student, Translational & Clinical Sciences
Prevalence of lung cancer risk factors and predictors of screening willingness: a community-based cross-sectional survey

Absalom Bolling, Graduate Student, Biological & Biomedical Sciences
Targeted Capsaicin Delivery Promotes Weight Control and Thermogenic Browning

Gabrielle Bolton, Undergraduate Student, Biological & Biomedical Sciences
Localization of NKCC1 Co-transporter expression in APOE mice: Preliminary Analysis

Mharisi Bonner, Graduate Student, Social Sciences
Looking Back to Go Forward: A Quantitative Analysis of Adverse Childhood Experiences, Coping Strategies, and Academic Achievement Among African American Community College Students

Trinity Borno, Undergraduate Student, Biological & Biomedical Sciences
Dietary Exposure Monosodium Glutamate Induces Non-B DNA structure Associated with Genomic Instability in Human Gastric Epithelial cells.

Sydney Bowden, Professional Student, Translational & Clinical Sciences
The Forgotten Vitamin: A Modern Case of Niacin Deficiency Presenting with the Classic Three Ds' Manifestations

Brianna Bowens, mph, Graduate Student, Education & Outreach
Nutrition 101: Combatting Childhood Obesity in Black and Latinx Children Living in Washington, D.C.

Brianna Boye, Undergraduate Student, Biological & Biomedical Sciences
Advancement of Bacteriophage Discovery: Analysis of ReidMinds

Karma Brame, Undergraduate Student, Education & Outreach
From Fractions to Formulas: Exploring the Association Between Fraction Arithmetic and Generalized Arithmetic

Zora Brantley, Undergraduate Student, Biological & Biomedical Sciences
Loss of PPAR- α Exacerbates Nocturnal Hypertension and Impairs Circadian Blood Pressure Regulation During Angiotensin II-Induced Hypertension

Aaliyah Bratcher, Graduate Student, Physical Sciences & Engineering
Modeling HIV Infection Dynamics with Multiple Time Delays: Assessing the Impact of CAB-LA on Latency Formation

Nia Breaux, Undergraduate Student, Creative Arts & Design
Reinterpreting Streamline Moderne Principles in Contemporary Product Design

Kwadwo Brenya, Professional Student, Biological & Biomedical Sciences
The Future of Artificial Intelligence in Specialty Dentistry: The Benefits, Challenges and Considerations of the Use of AI in Endodontics

Daniel Brewster, Undergraduate Student, Social Sciences
Silent Alarms: The Double-Edged Impact of Crime Alerts on College Students

Kamiya Bridges, Professional Student, Social Sciences
Association Between Residential Ward and Preterm Birth in Washington, DC

Deanna Briscoe, Graduate Student, Social Sciences
Black Maternal Mental Health Matters: Elevating the Silenced Voices

Kwinci Britt, Graduate Student, Biological & Biomedical Sciences
Molecular and Clinical Perspectives on GIST in Older Adults: Enhancing Detection and Treatment through Pharmacist Engagement

Azari Brooks, Undergraduate Student, Biological & Biomedical Sciences
*Temperature-Driven Population Changes in *Aedes aegypti*: Implications for Vector-Borne Disease Risk in the United States (2020-2025)*

Zikei Brooks, Undergraduate Student, Social Sciences
*[Abstract Entry] Title has not been decided yet**

Camille Broughton, Undergraduate Student, Biological & Biomedical Sciences
*Edge Effects in a Warming Climate: Community-Science Insights into the Expansion of *Ixodes scapularis* and Lyme Disease Risk*

Makayla Brown, Undergraduate Student, Biological & Biomedical Sciences
Ozone Pollution and Monarch Butterfly Decline in the Mid-Atlantic Region

Edward Brown, Graduate Student, Biological & Biomedical Sciences
Interactions of Two Neurotransmitter Systems in the Main Olfactory Bulb: Metabotropic Glutamate Receptors and Cannabinoid Receptors

Maya Brown-hunt, Graduate Student, Education & Outreach
Comparing Policies for Supportive K-12 Student Environments

Sage Bryant, Undergraduate Student, Social Sciences
Marriage on Our Teams: How Black Women Conceptualize Commitment and Long-Term Partnership

Ethan Bryant, Undergraduate Student, Social Sciences
Partisan Duty or Civic Duty: Voting as a Means to an End

Monique Bucknor, Undergraduate Student, Social Sciences
Gabayan ang Babae: Promoting Mental Health Through Family & Community

Nosimot Buhari, Graduate Student, Biological & Biomedical Sciences
Comprehensive Computational Profiling of MSH3 Missense Mutations and Stability Effects in Cancers and Neurodegenerative Disorders

Alexia Burford, Undergraduate Student, Social Sciences
Testing the Boundaries of Configural Face Processing: Inversion Effects in Pareidolia

Madison Burnard, Professional Student, Translational & Clinical Sciences
Independent and Interactive Effects of Race and Insurance on Preterm Birth Risk

Raven Bussey, Undergraduate Student, Biological & Biomedical Sciences
Investigating the role of Iba 1 protein in adult microglia during the neuroprotective phase of ischemic stroke

Nia Butler, Undergraduate Student, Biological & Biomedical Sciences
Discovering Mycobacteriophage NiaNia

Kendall Buucks, Undergraduate Student, Biological & Biomedical Sciences
Dose-Dependent Effects of Gbx2 on Cardiovascular Development in Hypomorphic Mutant Embryos

Olivia Byer, Undergraduate Student, Social Sciences
An Evaluation of Disparities in Sports-Related Concussion Care Among Collegiate Athletes at an HBCU

Jaydyn Callender, Undergraduate Student, Social Sciences
Higher Education, Lower Returns: Racially Stratified Pathways from Degrees to Occupations

Grace Callwood, Undergraduate Student, Environmental Sciences & Studies
Asopo Food Legacy: Addressing food apartheid through African ancestral traditions as seen in Baltimore City

Brittany Campbell, Junior Faculty / Lecturer / Instructor, Translational & Clinical Sciences
Sickle Cell Disease and Its Dental Implications

Ethan Carr, Undergraduate Student, Biological & Biomedical Sciences
Analyzing Antibiotic Effects on Growth of Bacteria Isolated from the Oral Cavity

Kendall Ceasar, Undergraduate Student, Biological & Biomedical Sciences
One Protein, Two Disorders: Beta-Amyloid, The Molecular Crossroad of Down Syndrome and Alzheimer's Disease

Be-ming Chang, Post Doc / Resident / Fellow / Research Associate, Biological & Biomedical Sciences
Retinal Degeneration in the STZ-Induced Diabetic Model

Tinashe Chapfika Johnson, Professional Student, Biological & Biomedical Sciences
A Retrospective Case-Matched Controlled Study Proposal Exploring The Risk Of Asthma And Its Association With Nasal Fossa Measurements

Nicole Chapman, Graduate Student, Translational & Clinical Sciences
Psychological Sequelae of Ketamine in Pediatric Patients: Elevated PTSD Risk Without Increased Depression

Regine Charles, Undergraduate Student, Biological & Biomedical Sciences
Fertility defects observed in homozygous and heterozygous genetic mutations of ETR-1 and CED engulfment pathway genes

Jazmyne Charles-balan, Graduate Student, Education & Outreach
Culturally Responsive Trauma Informed Care for Black Girls in K-12 Education

Nandi Chase, Undergraduate Student, Social Sciences
Distinct Thresholds for Decision Complexity: Evidence from Immigrant and Native-Born Adults in PIACC

Muhammad Chawla, Undergraduate Student, Biological & Biomedical Sciences
Modeling the Structure of SCO-spondin with AlphaFold

Naol Cheru, Graduate Student, Biological & Biomedical Sciences
Effects of Viral Aggregation State on Mucin Trapping and Infectivity

Ogenna Chike, Professional Student, Translational & Clinical Sciences
Incidence of vitiligo after SARS-COV2 mRNA vaccination in autoimmune prone populations

Jason Childs, Undergraduate Student, Physical Sciences & Engineering
An exploration into Stiffness Perception using a Custom-Built Elbow Exoskeleton

Oscar Chimborazo, Post Doc/Resident/Fellow/Research Associate, Physical Sciences & Engineering
A U-Net Prototype for HRRR 1-h ACPD Using Rain-Aware Sampling

Divinegift Chimere, Graduate Student, Physical Sciences & Engineering
Investigating the Impact of Biomass Composition on Dietary Fiber Classification through Tribo-Electrostatic Separation

Ezichi Chimezie, Undergraduate Student, Physical Sciences & Engineering
A Dual-Mode LLM-Based Chatbot for Resilient Disaster Information Access

Olivia Chin, Undergraduate Student, Biological & Biomedical Sciences
*Seasonal Patterns in Global Common Bottlenose Dolphin (*Tursiops truncatus*) Sightings: A Citizen Science Analysis*

Lakshmi Chirumamilla, Post Doc/Resident/Fellow/Research Associate, Translational & Clinical Sciences
Saffron As An Adjuvant Therapy Improves Ulcerative Colitis: A Multicenter Clinical Trial Assessing Inflammatory And Clinical Outcomes

Faiza Chowdhury, Graduate Student, Translational & Clinical Sciences
Hidradenitis Suppurativa: The Male Perspective

Emmanuel Christian, Undergraduate Student, Social Sciences
Food Swamps, Deserts, and Oases: Examining Community Food Environments and Health Outcomes in Virginia

Amiyah Christopher, Undergraduate Student, Biological & Biomedical Sciences
*Temporal Trends of *Danaus Plexippus* in Urban Environments: A citizen-science analysis in Washington D.C.*

Hsiang-jou Chuang, Post Doc / Resident / Fellow / Research Associate, Biological & Biomedical Sciences
Post-Processing Pipeline for Diffusion Basis Spectrum Imaging: Enhancing the Precision of Multi-Component Imaging Biomarkers for Brain Pathology

Jae eun Chung, Senior Faculty, Social Sciences
From Knowledge to Action: Caregiver Identified Priorities for Strengthening Pediatric Asthma Management in Subsidized Housing

Kendra Clark, Graduate Student, Translational & Clinical Sciences
Mother-Infant Separation Due to Incarceration: Implications for Attachment, Mental Health, and Intergenerational Trauma

Andrea Clarke, Graduate Student, Biological & Biomedical Sciences
Title: Evaluation of the Antimicrobial Efficacy of a Novel African Plant Extract, Plant X multi-drug-resistant bacteria (MDR): An In Vitro Study

Fiona Clarke, Undergraduate Student, Physical Sciences & Engineering
Classification of High-Risk Conditions for Pedestrian Crashes

Tyrese Cole, Graduate Student, Biological & Biomedical Sciences
Evaluating mannose-coated nanoparticles for delivery of gene and protein delivery to Immune Cells

Naomi Cole, Undergraduate Student, Social Sciences
Rat Foraging Decisions in a Virtual Floor Patch Task

Aminah Coleman, Undergraduate Student, Biological & Biomedical Sciences
Investigating RNA thermoregulatory structures in Langat Virus using DMS-MaPseq

Tori-ann Collier, Undergraduate Student, Biological & Biomedical Sciences
The Effects of Mildronate on Renal Glomerular Endothelial Injury in Sickle Cell Disease Mice

Bryce Collier, Professional Student, Biological & Biomedical Sciences
Incidence of Spinal and Intracranial Abscesses in Patients with Sickle Cell Disease: A 20-Year Retrospective Analysis

Caitlyn Collymore, Undergraduate Student, Biological & Biomedical Sciences
*Increasing Observations of the Spotted Lanternfly (*Lycorma delicatula*) in Washington, DC (2020–2025)*

Olivia Colquhoun, Undergraduate Student, Biological & Biomedical Sciences
Examining the Effects of Nicotine Products Containing WS-23 Using a Rodent Model

Bobbi Cooke, Graduate Student, Biological & Biomedical Sciences
GLP-1 Agonists and Outcomes in Total Hip Arthroplasty: A Systematic Review

Brittany Copeland, Graduate Student, Social Sciences
Everyone Watches Women's Sports: Black Women College Athlete Mental Health

Paola Correa-alfonzo, Graduate Student, Biological & Biomedical Sciences
Altered Trigeminal Ganglion and Nerve Division Morphology at E18.5 in Gbx2 Hypomorphic Mutants

Caitlin Coyne, Professional Student, Translational & Clinical Sciences
Cultural and Anatomical Influences on Surgical Technique and Outcomes in Asian versus Caucasian Blepharoplasty

Morgan Cunningham, Undergraduate Student, Biological & Biomedical Sciences
Ecological Drivers of Lyme Disease: Assessing Deer-Tick Co-Occurrence Using Citizen Science Data

Ashley Danso, Undergraduate Student, Education & Outreach
Why Health Career Minded College Students Engage in a Theatre Arts-based Peer Education Model for HIV Prevention

Kingston Davies, Undergraduate Student, Physical Sciences & Engineering
Black Press + AI

Makenna Davis, Undergraduate Student, Biological & Biomedical Sciences
Functional Characterization of small RNAs in Staphylococcus Aureus that may Regulate Drug Resistance

Joseph Davis, Undergraduate Student, Physical Sciences & Engineering
Comparative Study of Point Cloud and Voxel Methods for 3D Convolutional Neural Networks

Deasia Davis, Undergraduate Student, Biological & Biomedical Sciences
Spatiotemporal Patterns of Ambrosia artemisiifolia and Allergenic Pollen Exposure Risk in the DMV: A Citizen Science Approach

Alexis Davis, Undergraduate Student, Physical Sciences & Engineering
AR Alert System for Real World Task Completion: A Usability Study

Chanae Davis, Undergraduate Student, Biological & Biomedical Sciences
Visualizing Mitochondrial Quality Control and ER-Mitochondria Contact Sites Using Cryo-ET and Fluorescent Tagging

Gabriela De lima, Undergraduate Student, Physical Sciences & Engineering
Mechanical Alloying Nanoparticles using High-Energy Ball Milling

Caleb Debass, Professional Student, Biological & Biomedical Sciences
Bariatric Surgery and Neurologic Diagnoses in Adults With Obesity: A TriNetX Retrospective Cohort Study

Jaydn Decuir, Undergraduate Student, Physical Sciences & Engineering
Outlier Detection Statistical Methods for Predicting Aberrant Ship Behavior

Channing Delagall, Undergraduate Student, Biological & Biomedical Sciences
Exploring and Discovering Chad16

Grace Delpit, Undergraduate Student, Biological & Biomedical Sciences
Handedness in plant development and adaptation

Ruth Demessie, Graduate Student, Translational & Clinical Sciences
Impact Of Limited English Proficiency On Glp-1 Use In U.S. Adults With Diabetes And Obesity

Abigail Denham, Undergraduate Student, Biological & Biomedical Sciences
*An Investigation of the Relationship Between Woolly Bear Caterpillar (*Pyrrharctia Isabella*) Activity and Seasonal Dermatitis Trends*

Mrinalini Deverapali, Post Doc/Resident/Fellow/Research Associate, Translational & Clinical Sciences
Cardiovascular Disease as a Risk Amplifier of COVID-19 Severity and a Potential Contributor to Long-Term Gastrointestinal Sequelae

Neda Dezfuli, Post Doc/Resident/Fellow/Research Associate, Biological & Biomedical Sciences
Primary Versus Metastatic Tumors Of The Liver In An African-American Population: A Ten-Year Retrospective Analysis (2014-2024)

Fatumata Dia, Undergraduate Student, Environmental Sciences & Studies
Rooted by excluded: Examining Women's lived experiences of natural resource use and decision making exclusion

Colin Dickens, Graduate Student, Biological & Biomedical Sciences
Osteoporosis and Risk of Instrumentation Failure After Lumbar Fusion: A Large Propensity-Matched Cohort Study

Micah Dickerson, Post Doc/Resident/Fellow/Research Associate, Biological & Biomedical Sciences
Prevalence Of Rubber Dam Use Among Pediatric Dental Providers For Vital Pulp Therapy

Thane Douglass, Undergraduate Student, Social Sciences
Adinkra Symbols through Generative AI: A Semiotic Analysis of Emoji-Based Translation

Diego Duenas parapar, Graduate Student, Environmental Sciences & Studies
Simulating the Chemical Reaction Network of the Enceladus' ocean using MØD software

Rumi Dunkel vance, Graduate Student, Physical Sciences & Engineering
Affordable High Performance Optical Fiber Hydrophone

Jasmine Dunkley, Undergraduate Student, Education & Outreach
Access Denied: The History of Book Bans and Limited Access To Diverse Literature

Micayla Dupree, Undergraduate Student, Biological & Biomedical Sciences
*Habitat-Associated Variation in Blue Jay (*Cyanocitta cristata*) Occurrence Across Urban, Suburban, and Rural Environments: A Five-Year, Public-Data Analysis*

Dalyngs Duvelsaint, Professional Student, Translational & Clinical Sciences
Title: Clinical Demographics of Food Allergic Patients at the Howard University Outpatient Clinical Practice

Camryn Edwards, Professional Student, Biological & Biomedical Sciences
Association Between Neuraxial Labor Analgesia and Postpartum Hemorrhage

Jailyn Edwards, Graduate Student, Social Sciences
Inside the Lockerroom : The Mental Health Experiences of Historically Black Colleges and Universities' (HBCUs) Athletes

Faithful Egharevba, Undergraduate Student, Translational & Clinical Sciences
Urinary levels of complement membrane attack complex inhibitory protein CD59 correlate with hemoglobinuria, endothelial injury, and stages of sickle cell disease-associated chronic kidney disease

Victor Ejigah, Graduate Student, Translational & Clinical Sciences
Development of a Novel Neratinib and Docetaxel Core-Loaded and Trastuzumab Surface-Conjugated Nanoparticle for Treatment of HER-2 Positive Breast Cancer

Chinemere Ekezie, Post Doc/Resident/Fellow/Research Associate, Translational & Clinical Sciences
Early Compression Ultrasound for Suspected Cellulitis: A Practical Strategy to Reduce Delayed DVT Diagnosis (Case Series)

Chioma Ekwunazu, Professional Student, Biological & Biomedical Sciences
Childbirth, Trauma, and Neuroprotection: Mode of Delivery and Postpartum PTSD Risk

Loor Elbedour, Undergraduate Student, Physical Sciences & Engineering
Utilizing Internal Water Resources to Rebuild Water Infrastructure in Syria

Oluchi Emenike, Undergraduate Student, Physical Sciences & Engineering
Effect of Extractive Content on the Mechanical Performance of Corn Stover-PBAT Composites

Mack hendy Eustache, Professional Student, Biological & Biomedical Sciences
Hormonal Effects On Remineralization Of Enamel

Mallory Evans, Undergraduate Student, Biological & Biomedical Sciences
Investigating the mechanism of non-canonical inflammasome response to cytosolic LPS

Asia Evans, Undergraduate Student, Environmental Sciences & Studies
Isolation and Lytic Characterization of Novel Mycobacteriophage Memnon Infecting Mycobacterium smegmatis mc²155

Oluebubechukwu Eze, Professional Student, Translational & Clinical Sciences
Racial and Ethnic Differences in Cesarean Delivery Across Insurance Types, United States, 2014–2024

Akachukwu Eze, Professional Student, Translational & Clinical Sciences
Impact of Medicaid Expansion on Five-Year Mortality Among Patients with Melanoma in the United States

Chidubem valentine Ezikeoha, Undergraduate Student, Physical Sciences & Engineering
Speech-Based Detection and Severity Assessment of Alzheimer's Disease

Chioma Ezuma, Professional Student, Translational & Clinical Sciences
Perceived Interpersonal Safety and Adverse Cardiovascular Health Indicators Among Reproductive-Aged Women: Findings from the SAFE HEART Study

Jada Fennell, Undergraduate Student, Creative Arts & Design
The Exploration of Redesign

Hunter Fennell, Undergraduate Student, Ethics, Law & Religion
Safeguarding Skin in the Age of Algorithms: An Ethical Framework for AI-Driven Dermatological Care

Soluchi Fidel-ibeabuchi, Undergraduate Student, Physical Sciences & Engineering
Knowledge-Grounded Adverse Drug Event Detection from Clinical Narratives

Timothy tizhe Fidelis, Graduate Student, Physical Sciences & Engineering
Unveiling the Chemistry of Monoprotic, Amino and Benzoic Acids Derivatives Modulators on Zr-Based MOFs for Heavy Metal Ions Absorption in Aqueous Solutions

Kendal Fitzhugh, Undergraduate Student, Humanities
Centralized Education and Political Indoctrination: How States Create “Good” Citizens

Kobii Forney, Undergraduate Student, Biological & Biomedical Sciences
Polypeptide Polymorphism of the Sh ble Gene: Alternative Translation Initiation or Proteolytic Processing?

Zaria Franklin, Professional Student, Translational & Clinical Sciences
Impact of the globalization of clinical trials on conditions commonly seen in skin of color

Alexandria Fuller, Undergraduate Student, Environmental Sciences & Studies
Salinity and Salt Tolerance of Seashore Paspalum

Kierra Gaddie, Undergraduate Student, Environmental Sciences & Studies
DC Migration Safety: Evaluating the Correlation of DC Infrastructure and Bird Collisions in the Shaw and Howard University Area

Graciana Gardin, Undergraduate Student, Environmental Sciences & Studies
*Global Frequency Trends of *Ambrosia artemisiifolia* (Common Ragweed) from 2015–2024: A Citizen Science-Based Observational Analysis*

Mya Gardner, Professional Student, Biological & Biomedical Sciences
Understanding Maternal Vaccine Uptake During the Antepartum Period

Elise Garner, Undergraduate Student, Social Sciences
Tourism, Culture, and the Arts Industry in Trinidad and Tobago: Can These Sectors Expand Their Share of Gross Domestic Product?

Nicholas Gay jr, Undergraduate Student, Biological & Biomedical Sciences
Ragweed Pollen Count and Its Association with Hospital Readmission Rates and Mentally Unhealthy Days Among Chronic Asthma Patients in the DMV Region

Jaida Gedeon, Undergraduate Student, Biological & Biomedical Sciences
Urban Footprints: Effects of Habitat Fragmentation on Ant Diversity

Mannat Gill, Undergraduate Student, Biological & Biomedical Sciences
*Geographic Hotspots of *Solenopsis invicta* Observations from 2021 to 2026 Using Citizen Science Data*

Syed fahad Gillani, Post Doc/Resident/Fellow/Research Associate, Translational & Clinical Sciences
Glycemic Control and Risk of End-Stage Renal Disease Among Adults With Type 2 Diabetes and Albuminuria

Kalyssa Gillespie, Undergraduate Student, Social Sciences
ABSTRACT

Jordan Graves, Graduate Student, Biological & Biomedical Sciences
*Embryonic Age Distribution in the Viviparous Shiner Perch (*Cymatogaster aggregata*)*

Jordan Greene, Professional Student, Translational & Clinical Sciences
Comparing 5-Year Mortality Rates Among Patients Diagnosed with Lung Cancer With and Without Prior Low-Dose Computed Tomography Screening

Olivia Griswold, Graduate Student, Translational & Clinical Sciences
Distinct Recurrence Patterns and Survival Outcomes in Early-Onset Versus Later-Onset Stage I-III Colorectal Cancer: A Propensity-Matched Analysis

Dominique Guelce, Post Doc/Resident/Fellow/Research Associate, Biological & Biomedical Sciences
HBCU Physicians Thoughts on AI Integration for Minoritised Communities

Madison Gunn, Undergraduate Student, Environmental Sciences & Studies
*Genotyping and Genomic Mapping of *Portulaca* and *Talinum* Species Using High Throughput DNA Extraction*

Vicky Hackshaw, Undergraduate Student, Social Sciences
Tracing the Roots: How Early Environments Shape Resilience Across Generations

Kiera Hale, Undergraduate Student, Environmental Sciences & Studies
Spatial Analysis of Forest Restoration Volunteership at Rock Creek Park

Jared Hall, Professional Student, Biological & Biomedical Sciences
The Impact of Height on Long-Term Knee Injury Risk in Athletes: A 20-Year Matched Cohort Study

Malik Hamilton, Professional Student, Biological & Biomedical Sciences
Endocrine Disruption and Dentistry: A study on BPA Exposure and Prevention

Kevin Hanson, Professional Student, Education & Outreach
New-Onset Heart Disease in Schizophrenia: A Real-World Population-Level Incidence Analysis

Robert Hardy, Undergraduate Student, Translational & Clinical Sciences
Expanding the Understanding of Population Descriptors for Biomedical Research to Low- and Middle-Income Countries (LMIC) - Corpora Development

Brianna Harris, Undergraduate Student, Physical Sciences & Engineering
A Tunable Copolymer Hydrogel Platform for Material-Directed Beta-Like Cell Differentiation

Kayli Harris, Undergraduate Student, Biological & Biomedical Sciences
Discovery of Mycobacteriophage PallasAthena

Logan Hassell, Undergraduate Student, Biological & Biomedical Sciences
Migration Patterns

Mark Hatcher, Graduate Student, Biological & Biomedical Sciences
The Role of Peroxisome Proliferator Activated Receptor-alpha on Blood Pressure and Renal Function During a High Salt Diet

Whitley Hatton, Professional Student, Translational & Clinical Sciences
Preoperative GLP-1 Agonists in Orthopaedic Surgery: Impact on Fracture Healing and Revision Rates

Kiana Hayes, Undergraduate Student, Biological & Biomedical Sciences
Distinguishing Observer Effort from Ecological Trends: A Decade Analysis of Northern Cardinal Observations Using iNaturalist Data

Jennifer Hayes, Graduate Student, Translational & Clinical Sciences
Evaluation Standards for Large Language Model Interpretation of Pharmaceutical Markush Patent Claims

Imauri Haynes, Undergraduate Student, Biological & Biomedical Sciences
*Geographic Distribution of Arctic Fox (*Vulpes lagopus*) Observations in the United States: A Latitudinal and Temporal Analysis Using iNaturalist Data*

Thomas Heinbockel, Senior Faculty, Biological & Biomedical Sciences
Autaptic Hippocampal Neurons as a Model to Study HIV Tat Protein and Cannabinoid Receptor-Mediated Signaling

Kaedan Hendrix, Undergraduate Student, Biological & Biomedical Sciences
Towards Identifying Valosin-containing Protein Inhibitors Through Measuring ATPase activity

Amari Henry, Graduate Student, Education & Outreach
The Role of Artificial Intelligence in Higher Education

Kaylee Hensley, Undergraduate Student, Biological & Biomedical Sciences
Beyond Standard Therapy: The Role of Medical Cannabis in Chronic Neuropathic Pain Management

Rodolfo Hernandez perez, Post Doc/Resident/Fellow/Research Associate, Social Sciences
Whose Maps Matter? Participatory Cartography with D.C. Youth

Danielle Hicks, Professional Student, Biological & Biomedical Sciences
Beyond One-Size-Fits-All: Evaluating Pharmacogenomics-Guided Buprenorphine Formulation Selection in Opioid Use Disorder

Kennedy Hood, Undergraduate Student, Biological & Biomedical Sciences
Obesity linked factors increase breast cancer invasion potential

Lyric Hoover, Undergraduate Student, Humanities
Rememory Through Music in Sinners and Sonny's Blues

Danielle Hoover, Undergraduate Student, Biological & Biomedical Sciences
Seasonal Activity Patterns and Disease Transmission Risk of Aedes albopictus in the DMV Region (2020–2025)

Patricia Houston, Staff, Biological & Biomedical Sciences
PERCEIVED EFFECTS OF CANNABIS USE AMONG ADOLESCENTS AND YOUNG ADULTS WITH SICKLE CELL DISEASE

Chao-hsiung Hsu, Post Doc/Resident/Fellow/Research Associate, Biological & Biomedical Sciences
A 3D t-SNE Map of Microglial Morphology in a Rat Brain Following Cardiac Arrest

Katherine Huntwork, Undergraduate Student, Creative Arts & Design
Stinger by Kia

Muhammad ahmad Imran, Post Doc/Resident/Fellow/Research Associate, Translational & Clinical Sciences
Disparities in COVID-19 Outcomes Among predominately African American Patients: A Focus on Metabolic Syndrome and Gastrointestinal Health in a tertiary care Hospital

Akila Islam, Undergraduate Student, Translational & Clinical Sciences
GLP-1 Receptor Agonist Use and Breast Cancer Risk Among Women With BRCA-Related Genetic Susceptibility: A Propensity-Matched Cohort Study

Muneera Issa, Professional Student, Translational & Clinical Sciences
Maternal and Postpartum Outcomes in Pregnant Patients with Sickle Cell Disease

Jahmere Jackson, Undergraduate Student, Education & Outreach
A Systematic Scoping Review of Research on Black Male Educators: Perspectives on Recruitment and Retention in Special Education and STEM

Kennedi Jackson, Professional Student, Translational & Clinical Sciences
Implementing An Interdisciplinary Formulary To Improve Access and Outcomes For Uninsured Patients at a Federally Qualified Health Center

Naika Jecrois, Professional Student, Translational & Clinical Sciences
Factors Guiding Practitioner Use Of Antibiotics For Implant Placement

Hailey Jeffers, Undergraduate Student, Biological & Biomedical Sciences
Spatial Analysis of Aedes aegypti Distribution in Washington, D.C.: Leveraging Citizen Science to Map Urban Vector Risks

Sarah Jenkins, Graduate Student, Humanities
Root Working through the Garden: Black Women Writers' Rural Spiritual Ecological Ecocriticism in the U.S.

Kennedy Jester, mph, Graduate Student, Education & Outreach
Bridging the Gap: Enhancing Dental Care for Children with Autism Spectrum Disorder through Provider Training

Sydney Johnson, Graduate Student, Biological & Biomedical Sciences
Incidence of Allergic and Allergic-Type Reactions to IV Opioids in Black vs White Populations

Alana Johnson, Undergraduate Student, Biological & Biomedical Sciences
Coordinated Particle Transport During Development of a Soil-Dwelling Microbe

Darin Johnson, Senior Faculty, Ethics, Law & Religion
Digital Coup: The Conspiracy to Thwart Global Democracy

Oluwaseyitodun Johnson, Undergraduate Student, Biological & Biomedical Sciences
Food Allergies and Food Insecurity at HBCUs in the Greater Washington, D.C. Area

Rania Jones, Graduate Student, Biological & Biomedical Sciences
Toward Automated, Accessible Neuroimaging: An Auto-MRI Pipeline for Very-Low-Field (0.05 T) Systems

Niomi Jones, Undergraduate Student, Biological & Biomedical Sciences
The Impact of Amplitude on Flatfish Burial Performance and Sediment Fluidization

Ke'ajah Jones, Undergraduate Student, Biological & Biomedical Sciences
The Molecular Alarm System

Braniyah Jones, Undergraduate Student, Biological & Biomedical Sciences
*An Investigation of the Relationship Between Woolly Bear Caterpillar (*Pyrrharctia Isabella*) Activity and Seasonal Dermatitis Trends*

Dasha Jones, Undergraduate Student, Biological & Biomedical Sciences
Amata kuhlwainii

Braniyah Jones, Undergraduate Student, Environmental Sciences & Studies
*An Investigation of the Relationship Between Woolly Bear Caterpillar (*Pyrrharctia Isabella*) Activity and Seasonal Dermatitis Trends.*

Sydney Jones, Professional Student, Translational & Clinical Sciences
Association between Religiosity and Caregiving Appraisal Among Families of Children with Rare Diseases

Oluwadara Kalejaiye, Graduate Student, Physical Sciences & Engineering
Ibom Folktales: Applying NLP to Folktales from Minority Nigerian Languages

Abdulsalam Kalonji, Undergraduate Student, Environmental Sciences & Studies
Heatwave and Coldwave Projections Across U.S. Cities Under Climate Change

Ibukunoluwa Kayode, Undergraduate Student, Biological & Biomedical Sciences
Observing the Effects of ATM Inhibition, ATR Inhibition, & $\Delta E4orf3$ on Adenovirus Host Cell Immune Response Evasion in A549 Cells

Dy'quan Kearney, Professional Student, Biological & Biomedical Sciences
Preoperative TXA Lowers Thromboembolism Following Major Orthopedic Surgeries

Dyness Kejo, , Translational & Clinical Sciences
Does drinking of cow's milk cause anemia in cultures that are predominantly pastoralist? Evidence from Tanzania's Arusha

Maya Kiraithe, Undergraduate Student, Biological & Biomedical Sciences
*The Spatial Ecology of Oral Health: Linking *Streptococcus mutans* Activity to Dental Care Access and Socioeconomic Vulnerability*

Roselyne Kutai, Undergraduate Student, Biological & Biomedical Sciences
Isolation of Mycobacteriophage MidMama

Janae Lacayo, Undergraduate Student, Biological & Biomedical Sciences
*Distinguishing Observer Effort from Ecological Trends: A Decade Analysis of Northern Cardinal (*Cardinalis cardinalis*) Observations Using iNaturalist Data*

Jayden Lallemand, Undergraduate Student, Education & Outreach
Quantitative Eye-Tracking Analysis on How Students Interact with Chemistry Problem-Solving

Giselle Lampley, Professional Student, Biological & Biomedical Sciences
Quality Improvement: Improving Protocols for Intravenous Iron Use in Anemic Pregnant Patients

Janāai Landry, Graduate Student, Biological & Biomedical Sciences
Discovering and Analyzing Phage ReidMinds

M. ashura Langford, Undergraduate Student, Translational & Clinical Sciences
Characterizing Raciolinguistic Differences in Emotion Recognition for Post-Stroke Assessment

Lia Laurita, Undergraduate Student, Social Sciences
Evaluating the Psychological Effects of Harmful Media Exposure on Black Young Adults

Aneesah Lawrence, Undergraduate Student, Environmental Sciences & Studies
Juvenile Rehabilitation and Environmental Risk: The Mental Health Implications of Juvenile Incarceration Facilities Located Near Superfund Sites

Charisma Leach, Professional Student, Translational & Clinical Sciences
Gender Differences in Clinical Presentation and Surgical Outcomes of High Intensity Focused Ultrasound for Essential Tremor

Carlie Lee, Undergraduate Student, Biological & Biomedical Sciences
The FPN Q248H Mutation Increases Body Fat without Iron Accumulation in Liver and Pancreas

Sophie Lee, Undergraduate Student, Biological & Biomedical Sciences
Understanding the Functions of SroA and Its Impact on Sigma S

Jamaya Lee, Undergraduate Student, Environmental Sciences & Studies
*An Investigation of the Relationship Between Woolly Bear Caterpillar (*Pyrrharctia Isabella*) Activity and Seasonal Dermatitis Trends.*

Delaney Leonard, Undergraduate Student, Social Sciences
Neighborhood and Socioeconomic Factors Influence on Atopic Dermatitis

Shawn Levy, Professional Student, Translational & Clinical Sciences
Exploring GLP-1 Agonists as a Therapeutic Option for Hidradenitis Suppurativa

Alayna Lewis, Undergraduate Student, Biological & Biomedical Sciences
Seasonal Peaks in Sundowner Moth Observations and Potential Links to Allergy and Dermatitis Exposure Risk

Alayna Lewis, Undergraduate Student, Biological & Biomedical Sciences
Seasonal Peaks in Sundowner Moth Observations and Potential Links to Allergy and Dermatitis Exposure Risk

Priya Lewis, Undergraduate Student, Biological & Biomedical Sciences
The Novel Application of RACK1A Modulators as an Adjuvant Treatment Through the Induction of Hypersensitivity to Gibberellins

Junyan Li, Graduate Student, Biological & Biomedical Sciences
Comprehensive Assessment of Sequence-Derived Features for Predicting SUMOylation Sites

Kelly Lige, Undergraduate Student, Environmental Sciences & Studies
Assessing the Cumulative Burden of Particulate Matter (PM_{2.5}) and Urban Infrastructure in D.C.'s Wards 7 and 8

Aijha Liggins, Graduate Student, Biological & Biomedical Sciences
3D Bioprinted Tumor Models for Drug Testing and Personalized Oncology: A Pharmacist's Perspective

Rahni Lindsey, Professional Student, Biological & Biomedical Sciences
Hormonal Suppression and Injury Risk in Dancers: Finding Balance in the Art of Movement

Taylor Lofton, Graduate Student, Biological & Biomedical Sciences
The Impact of Cutibacterium acnes on Prostate Epithelial Cell Transformation

Naalomoley Lomotey, Professional Student, Biological & Biomedical Sciences
From Nuclear Receptor Biology to FDA Approval: The Translational Journey of Resmetrom

Kendall-cherie Long, Undergraduate Student, Biological & Biomedical Sciences
Identifying Protein Partners Interacting With UPF1

Janeen Louis, Undergraduate Student, Social Sciences
Holding Space: Culturally Responsive Digital Tools for Black Women's Mental Health

William Lowe, Graduate Student, Environmental Sciences & Studies
Agnostic Biosignatures: Elucidation of Chemical Signals in Organic Py-GC-MS Spectra

Haley Lucas, Undergraduate Student, Social Sciences
Exploring Racial Differences in Mother-Daughter Communication about Sex and Relationships, and Their Impact on Women

Fruzsina Madzig, Graduate Student, Environmental Sciences & Studies
Prebiotic Sugar-Amine Chemistry and the Emergence of Cell-Like Structures

Enock Magack, Graduate Student, Humanities
Between Borders and Belonging: Examining African International Students' Transformative Journeys in Cultural Adaptation During the Era of US crackdown and visa revocation.

Cai Malone, Undergraduate Student, Biological & Biomedical Sciences
Interactions of Hydrogen Peroxide and Anthocyanins on Planktonic and Dispersed Candida albicans Cells

Leonie Manafa, Undergraduate Student, Social Sciences
The Impact of Cultural Orientation on Self-Esteem and Coping Mechanisms

Brianna Manderson, Undergraduate Student, Biological & Biomedical Sciences
Histological examination of NKCC1 staining in NHERF1 KO mice: Preliminary analysis

Thomas Mansy, Professional Student, Translational & Clinical Sciences
A Propensity-Matched TriNetX Cohort Study Comparing Dexmedetomidine Versus Benzodiazepine Derivatives and Early Postoperative Outcomes in Older Adults

Imani Marc, Undergraduate Student, Social Sciences
The Relationship Between Academic Pressures and Creative Self-efficacy Among Black College Students

Melodie Marsh, Undergraduate Student, Social Sciences
Hope as a Catalyst for Mothers

Chelsea Mason, Undergraduate Student, Social Sciences
Public Water Accessibility in Ghana

Sulaiman Mathew-wilson, Undergraduate Student, Environmental Sciences & Studies
Breathing Inequality: A Justice-Centered Comparative Analysis of Urban Air Quality, Policy, and Equity in Accra, Cape Town, and Lagos

Elissa Matthews, Undergraduate Student, Biological & Biomedical Sciences
*Discovery of Asase: Isolation, Purification, and Lytic Characterization on *Mycobacterium smegmatis**

Nia Mayers, Undergraduate Student, Education & Outreach
Influence of NIL on College Athletes Aspiring to the WNBA

Savannah McBride, Undergraduate Student, Biological & Biomedical Sciences
Investigating Environmental Influences on Malaria and HbAS Distribution

Justine Mccarthy, Graduate Student, Social Sciences
Understanding and Addressing Resource Underutilization in Bronx Communities

Zoe McClendon, Undergraduate Student, Biological & Biomedical Sciences
Analysis of Protein Structure using RStudio

Kamora Mccowan, Undergraduate Student, Ethics, Law & Religion
How Governance Level Shapes AI Risk Mitigation Effectiveness: A Cross-Sector Comparative Analysis of AI Policy Frameworks

Jameel Mcdaniel, Undergraduate Student, Biological & Biomedical Sciences
Programmable Epigenetic Silencing of Enhancers with CRISPR based Epigenetic Modifiers

Olivia Mcglaughlin, Undergraduate Student, Biological & Biomedical Sciences
*"Post-transcriptional regulation of an operon encoding virulence sigma factor Sigma B by a small RNA in *Staphylococcus aureus*"*

Kira Mchugh, Undergraduate Student, Biological & Biomedical Sciences
Decoding PCOS: Aligning Patient Language with Clinical Diagnosis

Madisyn Mclaurin, Undergraduate Student, Biological & Biomedical Sciences
*Allostatic Load and Chronic Stress in the Eurasian Oystercatcher (*Haematopus ostralegus*): A Comparative Physiological Analysis Using Public Ecological Datasets*

- Michael Mcmillan**, Graduate Student, Social Sciences
How does perceived stereotype threat influence the identity development of African American male student-athletes?
- Chloe Mcneill**, Undergraduate Student, Creative Arts & Design
The Aerodynamics of Desire: Mythology and Modern Form in Fragrance Design
- Alanna Mears**, Professional Student, Biological & Biomedical Sciences
Geriatric Sepsis: Pharmacist-Led Strategies to Reduce Risk and Improve Outcomes
- Zarina Meer**, Post Doc/Resident/Fellow/Research Associate, Translational & Clinical Sciences
Racial Disparities in Ischemic Complications and Anti-VEGF Utilization Following Retinal Vein Occlusion
- Zain Mensah**, Undergraduate Student, Biological & Biomedical Sciences
Orexin Signaling Differentially Regulates Palatable and Chow Intake in Female Rats with Distinct Feeding Preferences.
- Praise-el Michaels**, Graduate Student, Social Sciences
Studying TikTok discourse around the 2024 US Presidential Election through Topics, Emotions, and Aggression levels
- Papa Midley**, Graduate Student, Biological & Biomedical Sciences
Post Traumatic Meningitis Outcomes and Incidences on Mental Health
- Leeah Miller**, Undergraduate Student, Biological & Biomedical Sciences
From Pavement to Park: A Comparative Study of Microbial Composition in Habitat Specific Urban Ants
- Diwane Mills**, Professional Student, Biological & Biomedical Sciences
A Quality Review of Fluoroscopy Time as a Surrogate for Radiation Exposure During Intramedullary Nailing of Tibia, Femur, and Hip
- Angel Mochoge**, Undergraduate Student, Social Sciences
Conceptualizing Racial Inequality in Drug Sentencing: A Systematic Scoping Review of Recent Scholarship on Cocaine-Related Offenses
- Abigail Moh**, Professional Student, Biological & Biomedical Sciences
Fluoride or Calcium Phosphate? A Comparative Review of Subsurface Lesion Remineralization
- Khalid Mohamed**, Graduate Student, Biological & Biomedical Sciences
Association Between Intratumoral Spatial Heterogeneity from AI-Derived Aggressiveness Score Maps and Time to Recurrence in Glioblastoma: Personalizing Recurrence Risk Stratification
- Ahmad Mohammed**, Graduate Student, Biological & Biomedical Sciences
Colorectal Cancer Risk in Crohn's Disease Patients After Colectomy: A Propensity-Matched Cohort Study Using a Nationwide EMR Database
- Destiny Montgomery**, Undergraduate Student, Biological & Biomedical Sciences
Evaluating Delivery of mRNA to Liver Cells Using a PEI-GalNAc Polymer

Justin Morency, Professional Student, Humanities
Pioneering Mind-Body Techniques in Medical Education: Dr. Dorothy Doyle Harrison's (RN, MPH, PhD) Biofeedback-Based Approach to Enhancing Test-Taking Skills in the 1960s-1970s

Gabrielle Morgan, Undergraduate Student, Physical Sciences & Engineering
The Effect of Altering Vancomycin: Novel Compounds in the Treatment of Bacterial Infections

Ajani Moss, Undergraduate Student, Physical Sciences & Engineering
Mathematical modelling of methanotrophic bioreactors to support the partial oxidation of methane to methanol from low concentration methane sources

David Mugisha, Undergraduate Student, Physical Sciences & Engineering
Optimization of Standoff Raman Spectroscopy for Lunar Mineral Characterization: A Proof-of-Concept Demonstration

Bria Nartey, Undergraduate Student, Social Sciences
The Power We Hold: Why Do So Few Black Women Serve as U.S. Senators?

Kendall Nelson, Undergraduate Student, Biological & Biomedical Sciences
Isolation and Identification of the Phage Treelanka

Danica Nestor, Graduate Student, Social Sciences
Breaking Barriers: Preliminary Findings on Help-Seeking Attitudes and Mental Health Service Utilization Among Black Men

Abisha Neupane, Undergraduate Student, Translational & Clinical Sciences
Genotyping and Genomic Mapping of Portulaca and Talinum Species Using High Throughput DNA Extraction

Kpana Augustina Ngafuan, Undergraduate Student, Environmental Sciences & Studies
Application of MaxEnt modeling to evaluate the geographic distribution of the Mexican Creeper in The Americas and Caribbean Islands under various climate conditions.

Jemima Nguebeyo Nguambe, Undergraduate Student, Environmental Sciences & Studies
Urban and Rural Observation Patterns of Sciurus carolinensis

Maryshawntel Obilor, Undergraduate Student, Social Sciences
Silent Epidemic: The Reality of Black Maternal Morbidity and Mortality

Adaku Ofoegbu, Junior Faculty / Lecturer / Instructor, Biological & Biomedical Sciences
Impact of Prior Authorizations on Access to Care for Opioid Use Disorder Patients in Washington D.C.

Erica Okeh, Undergraduate Student, Social Sciences
Reading in Between The Fine Lines: A Privacy Policy Analysis of AI Mental Health Apps

Jojo Okrah, Undergraduate Student, Social Sciences
From Dust to Deficit: An Analysis of How Harmattan Winds Impact Agricultural Output and Food Security in Ghana.

Oladunni Onabanwo, Undergraduate Student, Biological & Biomedical Sciences
The Impact of Temperature on the Geographic Distribution of the Pipevine swallowtail

Elizabeth Ordor, Post Doc/Resident/Fellow/Research Associate, Translational & Clinical Sciences

Loneliness and Lifestyle Behaviors among College Students: Findings from a Historically Black College and University

Austin Orock, Undergraduate Student, Biological & Biomedical Sciences

*Utilizing Citizen Science Data to Monitor Vector-Borne Disease Risk: A Study of *Triatoma gerstaeckeri* and Chagas Disease in Texas*

Mariam Oyejide, Undergraduate Student, Social Sciences

The Impact of Cultural Orientation on Self-Esteem and Coping Mechanisms

Kamille Padgett, Undergraduate Student, Social Sciences

Community Violence Exposure and ADHD in Black Girls

Hannah Paige, Undergraduate Student, Biological & Biomedical Sciences

Assessing Transfusion-Associated Iron Overload and Through Exercise in Pediatric Sickle Cell Disease

Jones Paintsil, Graduate Student, Social Sciences

Temperature Shocks and Child Malnutrition: Evidence from Sub-Saharan Africa

Sydney Parrish, Undergraduate Student, Social Sciences

School-to-Prison Pipeline: How Suspensions and Expulsions Contribute to Incarceration

Christian Parry, Junior Faculty/ Lecturer/ Instructor, Biological & Biomedical Sciences

Hexamer and Dodecamer Structures of the Very Large AAA+ ATPase VCP/p97 and Allosteric Inhibition as a Strategy to Stymie Cancer

Reign Patterson, Undergraduate Student, Social Sciences

Understanding the Impact of Large Language Models on Stress and Cognitive Workload in Tactical Decision Making

Cameron Paxton, Undergraduate Student, Biological & Biomedical Sciences

The Role of Differential Equation Modeling in Analyzing Vaccination Strategies and Waning Immunity During Epidemics

Soya Pearson, Undergraduate Student, Physical Sciences & Engineering

Development of Chemically Modified Lignin/PBAT Composites for Sustainable Biodegradable Film Applications

Hailey Perkins, Undergraduate Student, Biological & Biomedical Sciences

Healing Inequity: Advancing Racial Equity in Diabetic Foot Ulcer Care Through a Standardized Mobile Wound Care Protocol

Leah Peterson, Undergraduate Student, Social Sciences

Big Box, Bigger Consequences: Walmart, Nutrition, and Food Access in Clarksdale, Mississippi

Anya Phillips, Undergraduate Student, Biological & Biomedical Sciences

Comparative Genomics of Heat Shock Proteins: Investigating Thermal Tolerance in Thermophilic and Mesophilic Chaetomium Species

Mariah Polk, Undergraduate Student, Biological & Biomedical Sciences
Using Population Ragweed Observations to Predict Allergy-Related Emergency Department Visits in the Washington–Maryland Region (2019–2024)

Azariah Powell, Undergraduate Student, Environmental Sciences & Studies
The Eastern Black-Legged Tick and Its Connection to Lyme Disease Cases in Virginia

Henry Price, Undergraduate Student, Biological & Biomedical Sciences
Discovery and Initial Characterization of Mycobacteriophage PoloRLTeddy Using Mycobacterium smegmatis

Mudasir Rashid, Post Doc/Resident/Fellow/Research Associate, Biological & Biomedical Sciences
Assessing Prognostic and Therapeutic Associations Across EFAST, MSI, and MSS among African Americans Colorectal Cancer Subtypes

Charles Robinson-snead, Graduate Student, Social Sciences
Theoretical Review of Racial Identity Models: What Models Best Describe the Protective Quality of a Cohesive Racial Identity for African American Males Who Vicariously Witness Police Brutality?

Zian Rolle, Undergraduate Student, Biological & Biomedical Sciences
*Comparative Genomics of Innate Immunity: Evaluating Gene Conservation in *Camponotus floridanus*, *Drosophila melanogaster* and *Homo sapiens**

Chynae Ross, Undergraduate Student, Business
Algorithmic Pricing and Consumer Protection: Evidence from Uber Fares in the United States and United Kingdom

Sara Rostampour, Post Doc/Resident/Fellow/Research Associate, Biological & Biomedical Sciences
Helicobacter pylori Infection Induces Non-B DNA structure associated mitochondrial DNA Instability triggers an inflammatory response

Kaya Rowe, Professional Student, Biological & Biomedical Sciences
Comparative Risk of Acne Among Patients with Schizophrenia Treated with Clozapine Versus Other Second-Generation Antipsychotics: A Propensity Score-Matched Analysis

Jasneet Sahota, Undergraduate Student, Biological & Biomedical Sciences
Transcriptomic Characterization of E2F1 in Metabolic Dysfunction–Associated Steatotic Liver Disease (MASLD) in African Americans.

Abdul nafay Saleem, Undergraduate Student, Physical Sciences & Engineering
Algorithmic Phase Detection and Regression Modelling of Biofilm Surface Coverage

Salem Salem, Post Doc/Resident/Fellow/Research Associate, Translational & Clinical Sciences
The Impact of Liquid Plasma on Plasma Wastage

Helena Sanchez, Graduate Student, Social Sciences
Investing in our future: Financial and debt stress in psychology graduate student well-being

Kafilat Sarki-umar, Undergraduate Student, Physical Sciences & Engineering
Testing AI Safety Guardrails Across Personality-Based Personas

Sydney Sauls, Undergraduate Student, Environmental Sciences & Studies
Linking Air Pollution to Soil Contamination in Ivy City: Implications for Community Health and Phytoremediation

Ezinma Schwiers, Post Doc/Resident/Fellow/Research Associate, Translational & Clinical Sciences
The valve behind the bleed: Unmasking Heyde's syndrome in a transfusion dependent patient with ESRD

Azamit Seyoum, Graduate Student, Ethics, Law & Religion
Harnessing the Opportunities for Artificial Intelligence in Healthcare While Considering Ethical Implications: A Systematic Review

Ujjawal Shah, Undergraduate Student, Physical Sciences & Engineering
Learning Euler's Factor using Machine Learning & Deterministic Algorithms

Farzaneh Shahabi, Post Doc/Resident/Fellow/Research Associate, Biological & Biomedical Sciences
ETR-1 plays a previously unidentified role in C. elegans germline apoptosis

Aashirwad Shahi, Post Doc/Resident/Fellow/Research Associate, Biological & Biomedical Sciences
Loss of XRCC1 promotes cGAS/STING mediated innate immune signaling in gastric cancer

Araj Sharh, Undergraduate Student, Physical Sciences & Engineering
Fine-Tuning SimAM-ResNet34 and WavLM-Base for Cross-Lingual Speaker Verification

Sophia Shaw, Graduate Student, Social Sciences
The Cultural Socialization Scale Revitalization

Sijan Shrestha, Undergraduate Student, Physical Sciences & Engineering
Query Reformulation and Dense-Lexical Retrieval Fusion for Multi-Turn Retrieval-Augmented Generation

Jada Smith, Graduate Student, Education & Outreach
Substance Use Disorder Content Analysis within Doctoral Level Psychology Programs

Asia Smith, Undergraduate Student, Biological & Biomedical Sciences
Paraventricular Thalamic Neuronal Ensembles Activated During Early-Life Adversity Shape Alterations in Adult Reward Behavior

Katrina Sookraj, Graduate Student, Biological & Biomedical Sciences
FDA Regulations and Approval of Software as Medical Devices (SaMD) for Pre-diabetes and Diabetes Management: A Narrative Review

Zavien Spann, Undergraduate Student, Biological & Biomedical Sciences
Identifying a Novel Mechanism through which Emerin Regulates Nuclear Architecture

Darius Standifer, Undergraduate Student, Social Sciences
Does perceived lack of appreciation predict changes in resting heart rate?

Victoria Steele, Graduate Student, Social Sciences
Black Athletes, CTE, Cognition, and Mental Health: A Case Study of Phillip Adams

Sydney Stewart, Undergraduate Student, Physical Sciences & Engineering
Ciprofloxacin-Dipeptide Conjugates for Oral Drug Delivery Applications

Prakriti Subedi, Undergraduate Student, Physical Sciences & Engineering
Unsupervised Speech in the Wild Challenge (UPS): BiMamba2 Masked Spectrogram Modeling

Peace Taiwo, Undergraduate Student, Biological & Biomedical Sciences
Identifying Genetic Variants Associated with Gene Expression Variability Using Single-Cell RNA Sequencing

Evita Taneng, Undergraduate Student, Biological & Biomedical Sciences
Cell-Based Proximity Labeling to Determine the Interactors of the LEM2 Protein at the Nuclear Envelope

Anaya Tankard, Undergraduate Student, Biological & Biomedical Sciences
Influence of Menstrual Cycle Perception on Countermovement Jump Performance and Injury Risk Prediction in NCAA Division 1 Collegiate Female Athletes at Howard University

Alexander Tewobola, Undergraduate Student, Physical Sciences & Engineering
Modulation-Controlled Crystallinity in Zirconium-Based Metal–Organic Frameworks

Jediah Thomas, Undergraduate Student, Biological & Biomedical Sciences
Identifying Types of Glycans on Antibodies Using Dynamic Light Scattering

Lia Thomas, Undergraduate Student, Biological & Biomedical Sciences
Biogeographical & Ethnobotanical Correlation

Mila Thomas, Undergraduate Student, Social Sciences
Science as a Battleground of the Cold War: Soviet Innovations and Their Impact on the United States

Anira Thomas, Undergraduate Student, Social Sciences
Assessing Self-Awareness Through Self-Report & Self-Portrait: Implications for Life Satisfaction

Veronica Thomas, Senior Faculty, Translational & Clinical Sciences
Using a Culturally Responsive, Racialized, and Equity Perspective in Public Health Program Evaluations

Amiyah Thomas-flemon, Undergraduate Student, Social Sciences
Eldest Daughter Syndrome Research Project

Taryn Thompson, Undergraduate Student, Biological & Biomedical Sciences
Characterizing the mechanisms that alter colonic oxygen levels and result in harmful changes to gut health

Isaiah Thompson, Undergraduate Student, Physical Sciences & Engineering
Preliminary Process Design and Economic Evaluation of a Biological Methane Conversion Process

Anthony Tucker, Undergraduate Student, Physical Sciences & Engineering
Cross-Silo Federated Learning for Radiomics

Taylor Vander, Undergraduate Student, Physical Sciences & Engineering
Self-reported survey question rewording can negatively impact accuracy of prioritization tools

Keayla Vanderstoop, Undergraduate Student, Physical Sciences & Engineering
Effect of textile-derived nanoparticles on the pathogen-trapping potential of Porcine Gastric Mucin (PGM).

Michael Walker, Undergraduate Student, Physical Sciences & Engineering
First/Last-Mile Transit Access and Pedestrian-Vehicle Conflict: Trajectory-Based Safety Analysis in Washington, D.C.

Jayla Washington, Undergraduate Student, Social Sciences
The Weight A Woman Carries: Legacies of Inequity and Dementia in Black Elderly Women

Brianna Watson, Professional Student, Humanities
From Gloves to Grains: Natural Rubber Latex, Chitinase Biology, and the Historical Expansion of Allergic Risk (1980–2005)

Willie White iii, Undergraduate Student, Social Sciences
Framing the Firsts: Media Narratives, Intersectional Identity, and Voter Perceptions of Barack Obama and Kamala Harris in Presidential Debates

Osei-sekou Whylie, Undergraduate Student, Physical Sciences & Engineering
Development of High-throughput Testing for Organic Electrochemical Transistors (OECT's)

Camille Williams, Undergraduate Student, Biological & Biomedical Sciences
Cargo Modification to Overcome AAV Packaging Limit Abstract

Hannah rose Williams, Undergraduate Student, Social Sciences
Gentrification, Campus Ecology, and the Student Experience at Howard University

Isha Wilson, Professional Student, Biological & Biomedical Sciences
New-Onset Musculoskeletal Manifestations in Hidradenitis Suppurativa: A Large-Scale Incidence Analysis

Ava Wolfe wrenn, Undergraduate Student, Biological & Biomedical Sciences
Mapping the Risk: Harmonia axyridis Distribution and Human Health Outcomes Across the United States

Danielle Wood, Undergraduate Student, Physical Sciences & Engineering
Regioselective Synthesis of Iodo-o-Carboranes for Application in Rare Earth Extraction

Naomi Wright, Undergraduate Student, Social Sciences
How Policy and Colonialism Affected Black Poverty Worldwide

Guiqin Xie, Junior Faculty / Lecturer / Instructor, Translational & Clinical Sciences
Epigenetic Activation of Innate Immunity Restrains Tumor Growth in Head and Neck Cancer

Aara'l Yarber, Post Doc / Resident / Fellow / Research Associate, Environmental Sciences & Studies
Evaluating Air Quality Forecasts During Wildfire Smoke Events in the Mid-Atlantic Region: Implications for Environmental Justice

Amaar Zarrieff, Undergraduate Student, Social Sciences
Beyond the Screen: Parasocial Bonds and their Impact on Human Behavior

POSTER EXHIBITION

May 6, 2026

Jeremiah Bailey, Undergraduate Student, Physical Sciences & Engineering
Learning Symmetries in Turbulence: Kolmogorov, Equivariance, and Data Augmentation in ML

Anas Brim, Staff, Translational & Clinical Sciences
Distinct Clinical Profiles of Barrett's Esophagus, Esophageal Adenocarcinoma, and Squamous Cell Carcinoma: A 15 Year Analysis in a Predominantly African American Cohort

Meghan Brooks, Graduate Student, Social Sciences
CTE, Suicide Risk, and Structural Disparities in Black Athletes: Implications for Cognitive-Communication Care

Makayla Carroll, Undergraduate Student, Translational & Clinical Sciences
Equity in Action: Advancing Pediatric Health Through Community-Centered Interventions

Brooke Cobos, Graduate Student, Social Sciences

Reactive Regulation: FDA Warning Letters and the Visibility Bias of Drug Shortages

Aamori Connor, Undergraduate Student, Social Sciences
The Association Between Black Women's Work-Related Beliefs and Their Overall Wellbeing

Amber Courtland, Professional Student, Social Sciences
Food and Nutrition Insecurity Among Medical Students at a Historically Black Medical School

Mia Dean, Graduate Student, Social Sciences
Examining Social Media Usage among Black Women

Clayton Detant, Undergraduate Student, Social Sciences
Relationship Between Foreign Bank Ownership and Central Bank Independence in Latin America

Thane Douglass, Undergraduate Student, Social Sciences
Representational Constraints and Semiotic Incompetencies in Multimodal AI

Nia Dyson, Graduate Student, Social Sciences
TikTok Made Me: The Impact of Social Media Sites in Ethnic & Racial Identity Development

Miracle Ezeakachi, Undergraduate Student, Social Sciences
Addressing Postpartum Depression in Black Women: Community Support Groups vs. Individual Therapy

Nia Freeman, Undergraduate Student, Physical Sciences & Engineering
NICER Observations of the Accretion Disk Corona Candidate 4U 1210-64

Risav Ganguly, Undergraduate Student, Social Sciences
Opportunity Zones in Washington, D.C.: In-Place Improvement or Compositional Turnover? Evidence from Poverty, Rent Burden, Mobility and Employment

Falyn Gill, Undergraduate Student, Social Sciences
The Impact of School-Based Nutrition Programs on Childhood Obesity in School-Aged Children

Luther Gourdine, Undergraduate Student, Physical Sciences & Engineering
A.N.T.S. (Autonomous, Navigation, Technician, Swarm)

Kennedy Gregg, Undergraduate Student, Physical Sciences & Engineering
Evaluating Dialect Bias in Commercial Automatic Speech Recognition Systems: A Comparative Analysis of AAVE, Clean, and Noisy Speech

Jibek Gupta, Undergraduate Student, Physical Sciences & Engineering
Seedbot: Retrieval-Augmented Q&A System for Farmers

Marian Guzman, Staff, Biological & Biomedical Sciences
The Effect of High Fat Diet on Pituitary Insulin Signaling in Hepatic PKC ϵ Heterozygous Male Mice

Ethan Gwinn, Undergraduate Student, Social Sciences
White Flight and the Persistence of Residential Segregation in Mobile County, AL

Najla Hall, Undergraduate Student, Social Sciences
Exploring Beneficial Programs and Values for At-Risk Students in DC Public Schools

Saniya Harrigan, Undergraduate Student, Physical Sciences & Engineering
Denoising and Object Tracking in Adverse Conditions

Amira Harris, Graduate Student, Social Sciences
Preventing Ecological Pathways to Juvenile Justice Affecting Black Students

Chloe Hightower, Graduate Student, Social Sciences
From Surviving to Thriving: An Integrated Model of Afrocentric Coping and Stages of Change in Black Women

Nmachi Igwe, Undergraduate Student, Physical Sciences & Engineering
Improving Multilingual Medieval Handwriting Recognition through Multimodal Language Modeling

Jayson Johnson, Undergraduate Student, Physical Sciences & Engineering
Thermal Analysis for Balloon-Borne Payload – Cryostat Gondola

Anaya Johnson, Undergraduate Student, Social Sciences
The Intersection of Black Maternal Mortality, Misogynoir, Psychological Distress

Donovan Jones, Undergraduate Student, Physical Sciences & Engineering
FPGA Acceleration on PYNQ-Zynq for Efficient Edge AI Workloads

Hamid Kabia, Undergraduate Student, Physical Sciences & Engineering
Addressing Fairness and Trustworthiness in The Workplace Using Scalable Blockchain Survey Solutions

Selorm Kalitsi, Undergraduate Student, Physical Sciences & Engineering
The Language Family Effect: Improving African Sentiment Models Through Linguistic Relatedness

Julia Kanamine-surrick, Staff, Physical Sciences & Engineering
Simultaneous Acquisition of IV, dI/dV , and d^2I/dV^2 Curves: A Framework for IETS Measurement Protocols

Amaya Keys, Undergraduate Student, Physical Sciences & Engineering
Assessing Video LLM Performance in Detecting Child Safety Risks

Lotus Khanal, Graduate Student, Physical Sciences & Engineering
Effect of Solvent-Free Tribo-Electrostatic Separation on the Functional Properties of Yellow Pea Flour

Hoyt King, Undergraduate Student, Social Sciences
The Impact of Gender Socialization on Gender Ideology and Coping Among Diverse Socio-Cultural Groups.

Joanie Kinsella, Undergraduate Student, Social Sciences
The Art of Belonging: Transracial Adoptee Identity & Conceptualization

Nyima Kinteh, Staff, Biological & Biomedical Sciences
Hyperactivation of cGAS-STING Pathway Promotes Liver Inflammation in Down Syndrome

Alicia Knight, Undergraduate Student, Physical Sciences & Engineering
Predicting Microplastics Downstream of Wastewater Treatment Plant Discharge Sites

Najam Knobloch, Graduate Student, Social Sciences
Advancing Evaluation: The CR-TIE Model for Culturally Responsive, Trauma-Informed Practice in Evaluation

Anil Lalwani, Staff, Education & Outreach
Exploring Assessment Self-Efficacy among HBCU Faculty

Abdulmujeeb Lawal, Undergraduate Student, Physical Sciences & Engineering
Exploring Prompt Strategies for Joke Generation Under Input Constraints

Daquan Lawrence, Graduate Student, Social Sciences
"Urban Class Structure in Post-Apartheid South Africa: Case Studies from Johannesburg and Tshwane"

Nia Layne, Undergraduate Student, Social Sciences
Filtered Realities: Algorithmic Socialization, Identity Formation, and Internalizing Symptoms in Adolescent Girls

Daniel Lee, Graduate Student, Social Sciences
Anticolonial mobilization across Francophone Africa under the late IIIe, IVe, and early Ve republics: Work in Progress

Xin Li, Staff, Biological & Biomedical Sciences
Comparative Mutational Analysis of CIRBP Reveals Evolutionarily Conserved Stability Determinants

Da-yuan Liu, Staff, Biological & Biomedical Sciences
StainAI-Web: An Interactive Platform for Automated Whole-Slide Microglial Morphology Analysis

- Nia Long**, Undergraduate Student, Social Sciences
The Power of "Nappy": Texturism and Racialized Beauty Standards as Social Determinants of Traction Alopecia Risk Among Black Women
- Janeen Louis**, Undergraduate Student, Social Sciences
Different Worries, Different Outcomes? Examining Domains of Youth and Caregiver Worries About Anxiety Treatment
- Babin Manandhar**, Graduate Student, Physical Sciences & Engineering
Analyzing the Distribution of Capital Bikeshare Stations in Washington, DC: A Geographic Information System Approach Comparing Manual and Electric Bike Usage
- Charlie Mcadoo iii**, Undergraduate Student, Physical Sciences & Engineering
Synthesis and Characterization of Novel Dark Cesium Copper Bromide Crystals
- Jasmine Michel**, Undergraduate Student, Ethics, Law & Religion
Factors Related to Uptake of Ethical Guidelines: A Literature Review of Stakeholder Perspectives
- Ahmed Mohammed**, Undergraduate Student, Physical Sciences & Engineering
PedAlert: An Open-Source iOS System for Reducing Pedestrian Distraction Near Intersections
- Blayne Montaque**, Undergraduate Student, Physical Sciences & Engineering
Time-Aware Two-Dimensional Packing for Slicing-Aware 3D Printing Throughput Optimization
- Henry Moore**, Professional Student, Biological & Biomedical Sciences
Examining Cranial Pathologies in Pinnipeds
- Enrique Morales mateo**, Undergraduate Student, Physical Sciences & Engineering
Real-Time Lightweight Object Detection Pipelines on PYNQ FPGA for Edge Vision Deployment
- Matthew Morckos**, Graduate Student, Translational & Clinical Sciences
Differential Cataract Risk With Fibrates and Statins Across Type 2 Diabetes and Hyperlipidemia: A Global Multicenter Cohort Analysis
- Andrea Morris**, Undergraduate Student, Physical Sciences & Engineering
Classifying Risky Driver States Using In-Vehicle Monitoring: A Comparative Analysis of Urban and Rural Driving Environments
- Sanae Muhammad**, Professional Student, Biological & Biomedical Sciences
Postpartum Gastrointestinal Outcomes in Patients With Endometriosis by Mode of Delivery
- Clemson Nesbeth**, Undergraduate Student, Physical Sciences & Engineering
Augmenting Naval Ship Images for Viewing Distance
- Bethany Ngere**, Graduate Student, Biological & Biomedical Sciences
Development of melatonin [N-(2-(1H-indol-3-yl) ethyl) acetamide] derivatives as novel drug candidates for Alzheimer's therapeutics

Heather Noriega, Graduate Student, Biological & Biomedical Sciences
Theoretical Design and Structural Analysis of Cross-Genera AAVGo.1-HBoV3 Chimeric Capsids

Oluwatishe Ogunwo, Professional Student, Biological & Biomedical Sciences
Long Term Neurological Sequelae in HELLP Patients

Ijedimma Okafor, Graduate Student, Translational & Clinical Sciences
*Consequences Of Excluding CYP3A4*1B From Pharmacogenomic Testing Panels: Implications For Precision Dosing*

Alvan Okechukwu, Graduate Student, Translational & Clinical Sciences
Engineering Smart Nanoparticles to Combat Triple-Negative Breast Cancer

Chimdinma Okonkwo, Undergraduate Student, Creative Arts & Design
Streamlining Natural Forms in Fragrance Container Design

Toluwanimi Oladapo, Professional Student, Biological & Biomedical Sciences
The City Struggling to Sleep: Examining Associations between Neighborhood and Sleep Health through the Lenses of Self-Reported and Geospatial Indicators of Neighborhood Distress

Oluwabukunmi Olajubutu, Graduate Student, Biological & Biomedical Sciences
Synthesis and Characterization of Cell-Penetrating Peptide-Drug Conjugates for Pancreatic Cancer Treatment

Simisola Olorunwunmi, Professional Student, Biological & Biomedical Sciences
Effects of a 1-Month High-Fructose Diet on Insulin Signaling in Skeletal Muscle of Protein Kinase C Epsilon Heterozygous (PKC ϵ -Het) Male Mice

Chukwudalu Ononenyi, Graduate Student, Translational & Clinical Sciences
Hypermagnesemia and Risk of Major Fractures in Younger Adults : A Propensity Score-Matched Cohort Study

Charles Onyenemezu, Professional Student, Translational & Clinical Sciences
Perioperative Outcomes in Children With Recent Stimulant Prescriptions: A Propensity-Matched Cohort Study

Zyare Orr, Professional Student, Biological & Biomedical Sciences
Carrier Mediated Therapies for PARPi via LAT1 for Glioblastoma Treatment

Morinne Osborne, Professional Student, Biological & Biomedical Sciences
Impact of PNPLA3 rs738409 Variant on IL-6-Mediated Inflammation in African Americans with MASLD

Celisha Oscar, Graduate Student, Physical Sciences & Engineering
Hybrid Drug Design Method for Curating TAK-242-based Analogs for Alzheimer's Disease

Stephanie Osei, Graduate Student, Biological & Biomedical Sciences
Suppression Of The Notch Pathway By Tangeretin: A Therapeutic Strategy For Androgen-Dependent And Androgen-Independent Prostate Cancer Cells

Rachael Oyebade, Professional Student, Translational & Clinical Sciences
Assessing the Feasibility of Values and Preference Elicitation During Inpatient Psychiatric Hospitalization

Oluwafayokemi Oyolola, Graduate Student, Biological & Biomedical Sciences
Regulation of Nrg1 by Gbx2 in Development and Photothrombotic Stroke Models

Jayla Page-Thomas, Undergraduate Student, Education & Outreach
The Letter of the Day is V: a content analysis on Sesame Workshop focused videos on vaccinations and its aid in child vaccination decision making for parents.

Sydni Parhm, Undergraduate Student, Creative Arts & Design
Breathing Room

Noah Parks, Undergraduate Student, Humanities
Identity, Otherness, and the Black and White Biracial Condition

Shaokai Pei, Graduate Student, Biological & Biomedical Sciences
Zika Virus-Induced Lipid Droplet Depletion and Lipid Metabolic Reprogramming Drive Cardiac Dysfunction in 2D and 3D Cardiomyocyte Models

Desmonae Perry, Professional Student, Translational & Clinical Sciences
Graded Preoperative Serum Albumin Predicts Early Sepsis After Isolated Coronary Artery Bypass Grafting

Brent Piper, Undergraduate Student, Physical Sciences & Engineering
Automated Estimation of Glasgow Coma Scale Scores Using Multimodal Video Analysis

Jade Porche, Professional Student, Translational & Clinical Sciences
Evaluating the Association of Food Insecurity with Breastfeeding Practices and Introduction of Solid Food

Régine Powell, Professional Student, Biological & Biomedical Sciences
Optimizing Alzheimer's Prevention in Women with Diabetes: A PharmD Perspective

Nyasia Pressley, Professional Student, Biological & Biomedical Sciences
The Incidence of Schizophrenia and Other Psychotic Disorders in Narcolepsy Type 1 vs Narcolepsy Type 2

Rahual Rai, Undergraduate Student, Physical Sciences & Engineering
Disentangling Logic from Content: A Dual-Track Neuro-Symbolic Approach to Robust Reasoning

Jesslyn Randle, Undergraduate Student, Creative Arts & Design
Designing Interiors for Black Labor, Centering the Laboring Black Body

Chase Rector, Professional Student, Biological & Biomedical Sciences
Adiposity, Smoking and Longevity in Blacks and Whites

Jordyn Reese, Professional Student, Translational & Clinical Sciences
Age-Based Comparative Analysis of Clinical and Genetic Features in New-Onset Type 1 Diabetes

Doron Reid, Graduate Student, Physical Sciences & Engineering
Analyzing #BlackLivesMatter related Social Media Posts published from Racially diverse Geographic Regions in the United States

Ta'ajha Reyes, Undergraduate Student, Education & Outreach
Predictors of Self-Efficacy in STEM environments: A Review of Instructional Practices and HBCU Environments

Paria Rezaei, Graduate Student, Biological & Biomedical Sciences
Predicting Traumatic Brain Injury Severity Using Machine Learning

Katelyn Robertson, Professional Student, Translational & Clinical Sciences
Timing of Surgical Decompression in Cauda Equina Syndrome: A Retrospective Propensity-Matched Cohort Study Using TriNetX

Bretram Rogers, Professional Student, Biological & Biomedical Sciences
Investigation of Pathological Vertebrae Among Two Pinniped Species

Olivia Rollins, Undergraduate Student, Physical Sciences & Engineering
Onboard Multimodal Learning for Data-Driven Decision-Making in Humanoid Robotics

Abdul-Malik Saiid, Graduate Student, Physical Sciences & Engineering
Application of the Kohlrausch function to ultrafast transient absorption spectral kinetics.

Amauri Sanders, Undergraduate Student, Humanities
the why behing social media addiction

Maame Sarfo-Gyamfi, Professional Student, Biological & Biomedical Sciences
From Seizures to Stroke: A Large-Scale Analysis of Cerebrovascular Risk in Epilepsy

Kwatemaa Sarpong-asiedu, Undergraduate Student, Environmental Sciences & Studies
Waste Valorization and Scalability: An Analysis of How Waste Streams in Ghana Can Be Repurposed to Reduce Carbon Emissions in the Building and Construction Sector

Vanessa Scott, Professional Student, Biological & Biomedical Sciences
A Sight for Sore Ears: Examining pinniped ossicles using Micro-CT

Malachi Scott, Graduate Student, Translational & Clinical Sciences
Sedation Strategy and Post-Colonoscopy Hemorrhage: A Comparative Analysis of Propofol and Dexmedetomidine

Sarees Shaikh, Graduate Student, Biological & Biomedical Sciences
Dynamic Reactor Design Framework for Planktonic Iodate Bioremediation in Nuclear Waste-Impacted Groundwater

Christopher Shelton, Professional Student, Translational & Clinical Sciences
Skin Cancer Risk Among Patients with Celiac Disease: A TriNetX Analysis

Jaleel Shivers, Undergraduate Student, Environmental Sciences & Studies
Success Factors and Limitations of Grassroot Storytelling Campaigns—Just Moms STL and Empower DC

Justyna Sienkaniec, Professional Student, Translational & Clinical Sciences
Ketamine Exposure on the Day of Burn Debridement and Risk of Incident PTSD and Depressive Disorders: A Propensity-Matched EHR Cohort Study (TriNetX)

Madison Simmons, Undergraduate Student, Biological & Biomedical Sciences
Validation of Real-World Treatment Comparative Effectiveness in Membranous Nephropathy using MENTOR Trial Data

Kara Sivels, Undergraduate Student, Biological & Biomedical Sciences
*Northward Range Shift of the Red Bordered Pixie (*melanis pixe*) in Response to Climate Change by Kara Sivels*

Andaiye Smith, Undergraduate Student, Biological & Biomedical Sciences
Effect of Environmental Compounds on Glycan Exposure in Mucin

Toni Smith, Graduate Student, Physical Sciences & Engineering
Swarm for Security: Exploring Chaotic Dynamics as a Cryptographic Framework

Sierra Smith, Graduate Student, Translational & Clinical Sciences
Representation of Culturally and Linguistically Diverse Participants in AAC Research on Autism: A Rapid Review

Katlin St juste, Undergraduate Student, Creative Arts & Design
Do Students Spend More Money During Exam Weeks or During Non-Exam Week?

Madisyn Starks, Undergraduate Student, Biological & Biomedical Sciences
Impact of SMARCA1 Knockout on African American Prostate Cancer Cells

Iman Stephenson, Graduate Student, Physical Sciences & Engineering
Construction of a Single Point Coherent Thomson Scattering System at the Helicon Plasma Physics Laboratory's (HUPL) Helicon Plasma Experiment (HPX)

Khalila Stewart, Undergraduate Student, Biological & Biomedical Sciences
Water Hyacinth Biology as a Window into Human Disease and Treatment Pathways

Karielle Sutton, Undergraduate Student, Environmental Sciences & Studies
The Connection Between Climate Change and Lung Cancer

Fady Tawfik, Professional Student, Translational & Clinical Sciences
Blood Pressure and Hypertension Prevalence by Race in U.S. Adults Aged ≥85 Years

Tamia Taylor, Graduate Student, Social Sciences
Trauma, Race, And The Use Of Psychological Evidence In Juvenile Sentencing

Milani Terrell, Undergraduate Student, Environmental Sciences & Studies
Air Pollution and ADHD-Related Outcomes in Black Communities: Spatial and Statistical Evidence from DC

Hiermela Tewelde, Undergraduate Student, Biological & Biomedical Sciences
*Biodiversity Mapping and Temporal Abundance Trends of *Papilio glaucus* Using iNaturalist Data*

Seriane Thiam, Undergraduate Student, Environmental Sciences & Studies
Heavy is the Hand: How the Practice of Hand Pollination of Cocoa Pods in Ghana Can Affect Agricultural Production and National Economical Development

Kelise Thomas, Undergraduate Student, Creative Arts & Design
Airport Anxiety

Tyler Thompson, Graduate Student, Translational & Clinical Sciences
*Socioeconomic and Mental Health Determinants of Intimate Partner Violence-Related
Emergency Department Visits Among Women in California*

Leah Thompson, Undergraduate Student, Humanities
*The Post-Pandemic Transit Crisis and Its Disproportionate Impact on Socially Vulnerable
Communities in U.S. Cities: A Seattle Case Study*

Omasirichi Timothy, Undergraduate Student, Environmental Sciences & Studies
*Distinguishing Observer Bias from True Abundance: A comparison of *Sciurus carolinensis*
across urban, suburban, and rural landscapes using iNaturalist data*

Aryanna Toomer, Undergraduate Student, Biological & Biomedical Sciences
Evaluating DNA Barcoding for Species Identification of Urban Ants

Logan Travers, Undergraduate Student, Biological & Biomedical Sciences
Oxygen Sensor Analysis of Hypoxia in Metastatic Cancer Cell Cultures

Farai Tshililiwa, Undergraduate Student, Biological & Biomedical Sciences
Characterization of Mycobacteriophage Ronpheasely

Tom Tu, Staff, Biological & Biomedical Sciences
*A Generalized 19F MRS Platform for Quantifying Efflux Transporter Kinetics at the Blood-
Brain Barrier via Fluorinated Molecular Reporters*

Rakchhya Uprety, Graduate Student, Social Sciences
*National Trends in Telehealth Utilization Among Individuals With at Least One Prescription
Past Year (2020-2023)*

Chikwadolu Uzo-okeke, Undergraduate Student, Biological & Biomedical Sciences
*The Role of the Scaffold Protein Receptor of Activated C Kinase (RACK1) in the Reactive
Oxygen Species (ROS) Signaling Pathway.*

Cassius Vaughan, Undergraduate Student, Biological & Biomedical Sciences
*Association Between Peanut-Induced Anaphylaxis and Surrogate Markers of Cardiovascular
Risk: Abstract*

Zion Vaughn, Undergraduate Student, Environmental Sciences & Studies
*Integrating Machine Learning with Bioclimatic Projections to Predict Distribution Shifts in
African Montane Amphibians*

Naomi Vinod, Graduate Student, Social Sciences
Title: Psychological Distress Screening Outcomes at the Howard University Cancer Center

Ashley Wagga, Undergraduate Student, Biological & Biomedical Sciences
*DNA Barcoding of Local Ant Populations (*Monomorium carbonarium* and *Formicinae*)*

Johnisa Walcott, Professional Student, Translational & Clinical Sciences
*Medicaid Expansion and Glioblastoma Survival: Reducing Disparities Among Vulnerable
Populations*

Gabrielle Walker, Undergraduate Student, Biological & Biomedical Sciences
Effects of Environmental Disaster on Gray Matter Volume in Infant Rhesus Macaques

Samya Walker, Undergraduate Student, Environmental Sciences & Studies
Where Are They? Leveraging Machine Learning and Environmental Datasets to Identify Current and Future Snakebite Hotspots for Guiding Global Public Health Action

Amaya Waller, Undergraduate Student, Biological & Biomedical Sciences
*Comparative Analysis of Entomological Observations and Public Health Interest: A Culturomic Study of *Xylocopa virginica* and Human Search Behavior*

Jarett Wallerson, Professional Student, Translational & Clinical Sciences
Dysregulated Peroxiredoxins in Bladder Urothelial Carcinoma Are Associated with Altered Tumor Immune Microenvironment and Genomic Instability

Nia Walton, Graduate Student, Physical Sciences & Engineering
User-focused Design & Development of Responsible Voice-based AI for Tactical Decision-Making

Kinnon Ward, Professional Student, Biological & Biomedical Sciences
Machine Learning Approaches for Early Detection and Prognosis of Chronic Kidney Disease: Implications for the Southeastern United States

Christopher Watson, Graduate Student, Physical Sciences & Engineering
Beyond Accuracy: Forensic Evaluation of Trust and Grounding in LLM Outputs

Alana Watts, Undergraduate Student, Biological & Biomedical Sciences
From Forest to Suburb: Gray Fox Range Shifts and Implications for Zoonotic Disease Surveillance

Jerome Watts, Professional Student, Social Sciences
Burnout across specialties: Where does Psychiatry rank?

Y'kharyi Webb, Undergraduate Student, Biological & Biomedical Sciences
*Molecular Epidemiology of *Borrelia burgdorferi* in Suburban Ecosystems*

Ashton Webber-Deonauth, Graduate Student, Biological & Biomedical Sciences
The Potential role of Scaffold Protein the Receptor for Activated C Kinase 1 (RACK1) in mediating Auxin/ABA signal transduction pathways in divergent plant lineages.

Chiyaro Wedderburn, Graduate Student, Biological & Biomedical Sciences
Upregulation of EDN1 and MMP3 in the BTBR ob/ob Mouse Model of Diabetic Kidney Disease: Insights into Inflammatory and Profibrotic Signaling Pathways in Disease Progression

Kaitlan Weir, Undergraduate Student, Biological & Biomedical Sciences
Risks Associated with Bovine Bone Xenografts in Orthopedic and Dental Surgery

Bria Welcome, Professional Student, Translational & Clinical Sciences
Direct vs. Indirect Childhood Victimization among African American Young Adults in Washington D.C.

Mia Weller, Undergraduate Student, Biological & Biomedical Sciences
An Analysis of Influenza A Viral Dynamics and Pathology Following Paternal Immune Activation

Melanece Wesley, Graduate Student, Social Sciences
Culturally Responsive AI: Centering Afro-Latine Mental Health Experiences for Equitable AI Design & Development

Jalyn White, Graduate Student, Translational & Clinical Sciences
Adolescent Dysmenorrhea and Risk of Subsequent Irritable Bowel Syndrome: A Multicenter Retrospective Cohort Study

Kirsten Williams, Undergraduate Student, Biological & Biomedical Sciences
Discovery and experimental characterization of bacteriophage Asase

Brandon Williams, Undergraduate Student, Environmental Sciences & Studies
Grid Instability and Diesel Dependence in Ghana's Energy Transition

Isha Wilson, Professional Student, Translational & Clinical Sciences
New-Onset Musculoskeletal Manifestations in Hidradenitis Suppurativa: A Large-Scale Incidence Analysis

Niah Woods, Graduate Student, Social Sciences
Reproductive Health in the Workforce: A White Paper on Reducing Absenteeism and Pay Loss

Joi Wright, Staff, Social Sciences
Unmet Basic Needs and Cigarette Smoking among Black Americans

Brianca Wright, Graduate Student, Social Sciences
When Discipline Speaks: A Reflective Functioning Framework for Understanding School Experiences

Qiaobin Yao, Graduate Student, Biological & Biomedical Sciences
Deciphering the Structural Impact of Schizophrenia-Associated Missense Mutations in CUL1 via Hybrid Computational Modeling

Qiaobin Yao, Graduate Student, Biological & Biomedical Sciences
Computational and experimental identification of potential neutralizing peptides derived from human ACE2 against SARS-CoV-2 infection

Nya Young, Undergraduate Student, Education & Outreach
Book Deserts and Its Impact on Low-Income Communities

Emilia Yun, Undergraduate Student, Biological & Biomedical Sciences
Protein Phosphate-1-targeting 1E7-03 prevent dehydration-induced sickling of SCD mouse RBCs

Hania Zehra, Staff, Biological & Biomedical Sciences
Microglial Activation Following Acute Morphine Exposure

Luwei Zeng, Staff, Physical Sciences & Engineering
Not Waiting for Crashes: Reliable Prediction of Pedestrian Close Calls from Statewide Video



Office of Research

OFFICE OF RESEARCH
Interdisciplinary Research Building 421 E
Washington, DC 20059
202.806.6000
<https://research.howard.edu/>